

# Outdoor Heritage Fund Grant Application

The purpose of the North Dakota Outdoor Heritage Fund is to provide funding to state agencies, tribal governments, political subdivisions, and nonprofit organizations to:

**Directive A.** Provide access to private and public lands for sportsmen, including projects that create fish and wildlife habitat and provide access for sportsmen;

**Directive B.** Improve, maintain, and restore water quality, soil conditions, plant diversity, animal systems and to support other practices of stewardship to enhance farming and ranching;

**Directive C.** Develop, enhance, conserve, and restore wildlife and fish habitat on private and public lands; and

**Directive D.** Conserve natural areas for recreation through the establishment and development of parks and other recreation areas.

## Exemptions

Outdoor Heritage Fund grants may not be used to finance the following:

- A. Litigation;
- B. Lobbying activities;
- C. Any activity that would interfere, disrupt, or prevent activities associated with surface coal mining operations; sand, gravel, or scoria extraction activities; oil and gas operations; or other energy facility or infrastructure development;
- D. The acquisition of land or to encumber any land for a term longer than twenty years; or
- E. Projects outside this state or projects that are beyond the scope of defined activities that fulfill the purposes of Chapter 54-17.8 of the North Dakota Century Code.

## Application Deadline

Applications for the first grant round cycle are due on **December 2, 2013 at 5:00 p.m. CST.** All information, including attachments, must be submitted by that date. See instructions below for submission information.

## Instructions

It is our intent to have this form available on line. However, until that on-line form is available we are asking that you submit your application as a Word document. Please download this Word document (available on the Industrial Commission/Outdoor Heritage Fund Program website at <http://www.nd.gov/ndic/outdoor-infopage.htm> ) to your computer and provide the information as requested. You are not limited to the spacing provided except in those instances where there is a limit on the number of words. After completing the application, save it and attach it to an e-mail and send it to [outdoorheritage@nd.gov](mailto:outdoorheritage@nd.gov) .Then submit the Word document as noted in the following paragraph.

Attachments in support of your application may be sent by mail to North Dakota Industrial Commission, ATTN: Outdoor Heritage Fund Program, State Capitol – Fourteenth Floor, 600 East Boulevard Ave. Dept. 405, Bismarck, ND 58505 or by e-mail to [outdoorheritage@nd.gov](mailto:outdoorheritage@nd.gov) . The application and all attachments must be received or postmarked by the application deadline. You will be sent a confirmation by e-mail of receipt of your application.

You may submit your application at any time prior to the application deadline. Early submission is appreciated and encouraged to allow adequate time to review your application and ensure that all required information has been included. Incomplete applications may not be considered for funding. Any item noted with an \* is required.

**Oral Presentation.** Please note that you will be given an opportunity to make a ten-minute Oral Presentation at a meeting of the Outdoor Heritage Fund Advisory Board tentatively scheduled for the week of January 13, 2014. These presentations are strongly encouraged.

**Open Record.** Please note that your application and any attachments will be open records as defined by law and will be posted on the Industrial Commission/Outdoor Heritage Fund website.

**Name of Organization \***

Bowman County Weed Board

**Federal Tax ID# \***

45-6002202 (Bowman County)

**Contact Person/Title \***

Randall Gaebe, Bowman County Weed Officer

**Address \***

104 1<sup>st</sup> St NW, suite 1

**City \***

Bowman

**State \***

ND

**Zip Code \***

58623

**E-mail Address \***

bowmanweed@nd.gov

**Web Site Address (Optional)**

<http://www.bowmannd.com/county/weedboard>

**Phone \***

701-523-4902

**Fax # (if available)**



List names of co-applicants if this is a joint proposal

Cheryl Mandich and Daniel Casey, American Bird Conservancy

Judd Jasmer and Kent Luttschwager, ND Game and Fish Department

Robert Martin, US Army Corps of Engineers

Cami Janikowski, Bowman/Slope Soil Conservation District

**MAJOR Directive: (select the Directive that best describes your grant request)\***

Choose only one response

**Directive A.** Provide access to private and public lands for sportsmen, including projects that create fish and wildlife habitat and provide access for sportsmen;

**Directive B.** Improve, maintain, and restore water quality, soil conditions, plant diversity, animal systems and to support other practices of stewardship to enhance farming and ranching;

**Directive C.** Develop, enhance, conserve, and restore wildlife and fish habitat on private and public lands; and

**Directive D.** Conserve natural areas for recreation through the establishment and development of parks and other recreation areas.

**Additional Directive: (select the directives that also apply to the grant application purpose)\***

Choose all that apply

**Directive A.** Provide access to private and public lands for sportsmen, including projects that create fish and wildlife habitat and provide access for sportsmen;

**Directive B.** Improve, maintain, and restore water quality, soil conditions, plant diversity, animal systems and to support other practices of stewardship to enhance farming and ranching;

**Directive C.** Develop, enhance, conserve, and restore wildlife and fish habitat on private and public lands; and

**Directive D.** Conserve natural areas for recreation through the establishment and development of parks and other recreation areas.

**Type of organization: (select the category that describes your organization)\***

- State Agency
- Political Subdivision
- Tribal Entity
- Tax-exempt, nonprofit corporation, as described in United States Internal Revenue Code (26 U.S.C. § 501 (c))

**Project Name\***

Bowman County Conservation Grazing Project

**Abstract/Executive Summary. An Executive Summary of the project stating its objectives, expected results, duration, total project costs and participants.\* (no more than 500 words)**

This project will assist in the successful continuation of a conservation grazing project at Bowman Haley Dam in Bowman County, North Dakota. The project began in 2012 as part of an integrated pest management program to control or eradicate noxious weeds, particularly Canada thistle (*Cirsium arvense*), on US Army Corps of Engineer owned land and North Dakota Game and Fish Department leased land in Bowman County, North Dakota. Our project involves adding targeted livestock grazing of noxious weeds in addition to herbicide and insect bio-control programs on previously "idle" land. As the project continues, we now wish to evaluate the impacts on native and introduced plant communities and wildlife habitat and species richness, and to add tools that will protect water quality of the streams and reservoir. The project will continue through the 2014 and 2015 summer growing seasons.

In early summer, we will assist a cooperating cattle producer in training a herd of cattle to desire to consume Canada thistle vegetation. This herd will be placed on pastures and native range that have become infested with Canada thistle and other invasive plant species. The grazing herds will be managed with portable electric fencing, assuring optimal distribution of grazing animals, followed by adequate rest and recovery. A portable solar water station will be used to draw drinking water from the creeks, better maintaining healthy stream banks and riparian areas.

The conservation grazing is expected to reduce the use of herbicides for noxious weed control and will also provide benefit by reducing other invasive species such as smooth brome, crested wheatgrass, and Kentucky bluegrass. Early season grazing of these cool-season invasive plant species is expected to improve the succession of native cool-season



and warm-season grasses and broadleaf plants, providing more biodiversity and enhanced wildlife habitat and food sources.

Collaborating partners in this project are as follows: Cheryl Mandich and Daniel Casey of American Bird Conservancy, Judd Jasmer and Kent Luttschwager of ND Game and Fish Department, Robert Martin of US Army Corps of Engineers, and Cami Janikowski of Bowman/Slope Soil Conservation District. Each of these individuals will be involved in project operations.

Our grant request of \$14,085.00 will be used to purchase a second portable solar water station, additional portable electric fence materials, and travel expenses for monitoring grassland bird species. Matching funds provided by collaborating partners as in-kind services and equipment are estimated to be \$15,159.80. Total project costs will be \$29,244.80.

**Amount of Grant request \$** \$14,085.00

**Total Project Costs\$** \$29,244.80

(Note that in-kind and indirect costs can be used for matching funds)

#### **Amount of Matching Funds**

\$2,375.08 in-kind services from Bowman County Weed Board

\$12,784.72 in-kind services from collaborating partners

#### **Source(s) of Matching Funds**

- Bowman County Weed Board will provide in-kind vehicle travel to the site. Bowman County Weed Officer, Randy Gaebe, will provide in-kind labor to train livestock to eat Canada thistle, install and maintain electric fence, install and maintain solar water station, and monitor impacts on vegetation.
- Cheryl Mandich, Long-billed Curlew specialist with American Bird Conservancy, will provide in-kind labor to monitor post-treatment presence/absence and diversity of grassland-dependent breeding bird species using the sites.
- ND Game and Fish Department will provide in-kind vehicle travel to the site. Judd Jasmer, North Dakota Game and Fish Department biologist will provide in-kind labor to install and re-locate portable electric fence, install and maintain solar water system, and herd livestock through paddocks.
- A livestock cooperator will provide in-kind labor to train livestock to eat Canada thistle and to herd livestock through paddocks.
- Bob Martin, US Army Corps of Engineers, will provide in-kind labor to draft a grazing plan agreement for the livestock producer.

### **Certifications \***

■ I certify that this application has been made with the support of the governing body and chief executive of my organization.

■ I certify that if awarded grant funding none of the funding will be used for any of the exemptions noted on Page 1 of this application.

### **Narrative**

#### **Organization Information – Briefly summarize your organization’s history, mission, current programs and activities. \***

Include an overview of your organizational structure, including board, staff and volunteer involvement. (no more than 300 words)

The Bowman County Weed Board is responsible for noxious weed control in Bowman County. The Board’s mission is to control and eradicate noxious weeds in Bowman County. The Bowman County Commission appoints a three person board, currently consisting of Jerid Janikowski, George Buckmeier, and Jeff Oakland. Staff members are Randy Gaebe, Weed Officer and Ken Becker, weed control technician. Current programs include roadside noxious weed control along all federal, state, county and maintained township roads, Landowner Assistance Program to provide financial assistance to landowners for weed control on privately owned land, and custom application of weed control products on private and public lands within Bowman County. In recent years weed control efforts have begun focusing on improving land management to impact noxious weed populations, which will reduce our reliance on pesticides.

We successfully work with collaborating partners: Natural Resource Conservation Service, US Army Corps of Engineers, North Dakota Game and Fish Department, Pheasants Forever, Bowman/Slope Soil Conservation District, NDSU Extension Service and other groups to educate property owners and improve the quality of the land and vegetation in Bowman County.

#### **Purpose of Grant – Describe the proposed project identifying how the project will meet the specific directive(s) of the Outdoor Heritage Fund Program \***

*Identify project goals, strategies and benefits and your timetable for implementation. Include information about the need for the project and whether there is urgency for funding. Please indicate if*



*this is a new project or if it is replacing funding that is no longer available to your organization. Identify any innovative features or processes of your project.*

### **Project Background:**

The US Army Corps of Engineers land surrounding Bowman Haley Dam in Bowman County had a history of overgrazing in past decades. To restore vegetative growth and cover for wildlife, grazing had not been allowed on the land for approximately 20 years. While leaving land idle was well-intended for enhancement of wildlife habitat, the duration of rest has inadvertently shifted the plant community to become dominated by invasive species, creating a biological environment that is now adverse to many wildlife species. The native rangeland on these lands has become infested with noxious weeds, such as Canada thistle, and non-native invasive grasses, such as smooth brome grass (*Bromus intermis*), Kentucky bluegrass (*Poa pratensis*), and crested wheatgrass (*Agropyron cristatum*).

Beginning in 2011, The North Dakota Game and Fish Department, which leases approximately 1100 acres of land from the US Army Corps of Engineers, began a livestock grazing project on a small parcel of land adjacent to Alkali Creek. The goal was to improve wildlife habitat and restore vegetative quality. This was followed in 2012 by a Canada thistle targeted grazing project on land managed by the US Army Corps of Engineers, which is located three miles south, and adjacent to the Grand River. Both these grazing projects have continued through 2013, and have expanded each year.

### **Why Graze Livestock on these Public Lands?**

Livestock grazing has been used by land managers across the U.S. to restore plant communities suffering the effects of long term rest and resulting invasion of noxious weeds. Researchers at many land grant universities have implemented "Targeted Grazing" programs utilizing sheep and goats for prescriptive weed management. Rachel A. Frost and Karen L. Launchbaugh discuss these practices in a review paper titled "*Prescription Grazing for Wildlife Weed Management- A new look at an old tool to control weeds on rangelands*" published in 2003 in *Rangelands* 25:43-47.

Recently, an animal behavioral training method has been developed and promoted by Kathy Voth of Loveland, Co. Her program, Livestock for Landscapes, uses simple behavioral training techniques that convince beef cattle to consume noxious weed vegetation that most land managers and cattle producers previously assumed was undesirable to cattle. "Conservation grazing" is a term describing the enhancement of grassland biodiversity through the careful and well-timed placement of cattle on the land. Proper grazing keeps grass growth at the correct level and rejuvenates the native grasses while controlling invasive species.

### **Expected Outcome**

To improve the activity and function of soils by reducing the presence of invasive plants and noxious weed species, while increasing the native plant diversity and to increase the awareness of the beneficial use of grazing animals to properly alter vegetation, while



reducing the need for costly chemical application. Use of the sites by grassland bird species dependent on shorter grass structure (e.g. Long-billed Curlew) is expected to increase.

The successes demonstrated with this project will easily transfer to other land managers faced with similar invasive plant concerns. Local landowners and agency land managers will recognize the benefits of using multiple practices to reduce or eliminate noxious weeds, resulting in widespread adoption of non-traditional weed control techniques that will enhance the effectiveness of traditional weed control management which involves herbicides only.

## **Project Methods**

Conservation livestock grazing will be accomplished with a cooperating producer(s) supplying cattle for a short duration grazing season. Temporary electric fencing will be used to provide small pastures permitting better control of the timing, intensity and frequency of grazing as well as enhancing animal density and keep livestock from negatively impacting riparian areas and lake shore. A mobile solar-powered water pump and tank will be used to provide stock water drawn from adjacent lake or streams. This will eliminate the need for cattle to access the stream and lake for water consumption, thus maintain healthy stream banks and reduce water quality concerns.

Livestock grazing will help clear old vegetation, removing excess canopy to aid in locating low-growing Canada thistle rosettes. Cattle will be trained to consume Canada thistle plants using the system designed by Kathy Voth, of Livestock for Landscapes. The training regime will involve feeding various grains and by-product feedstuffs during a twice-a-day feeding regime to cattle on pasture for several days prior to mixing harvested Canada thistle vegetation into the feed, before finally delivering only Canada thistle vegetation in the feeding tubs. This method has been shown to train cattle to begin seeking Canada thistle plants in the pasture while grazing. Repeated grazing of Canada thistle causes plants to utilize and deplete energy resources otherwise used for plant reproduction. This suppression of both seed and rhizome reproduction will likely result in reduced Canada thistle plant population and therefore reduce the volume of herbicide to be applied.

## **Location and size of project area**

The project areas will include the Bowman-Haley Dam and Lake in southern Bowman County, North Dakota. The land is owned or operated by US Army Corps of Engineers, North Dakota Game and Fish Department, and the Bowman County Water Resource District.

The ND Game and Fish Department pasture is approximately 274 acres, along both North and South sides of Alkali Creek, on the Northwest side of Bowman Haley Reservoir. The US Army Corps of Engineers pasture is approximately 298 acres, along both the North and South sides of the North Grand River, Southwest of Bowman Haley Reservoir. See attached map.



**Management of Project – Provide a description of how the you will manage and oversee the project to ensure it is carried out on schedule and in a manner that best ensures its objectives will be met.\***

Bowman County Weed Officer, Randy Gaebe along with Robert Martin, of the US Army Corps of Engineers, and Judd Jasmer, of the North Dakota Game and Fish Department will work with a cooperating livestock producer to establish electric fence boundaries to properly manage the grazing system along the North Grand River and Alkali Creek as each enters Bowman Haley Dam.

Cheryl Mandich of American Bird Conservancy will collect grassland bird monitoring information on these sites, using standardized point count and/or transect methods, in accordance with the North Dakota Game and Fish Department.

**Evaluation – Describe your plan to document progress and results. \***

How will you tell if the project is successful? Please be specific on the methods you will utilize to measure success. Note that regular reporting, final evaluation and expenditure reports will be required for every grant awarded.

Annual monitoring of vegetation and wildlife species information will be documented. Monitoring sites will be randomly selected on uplands and riparian areas. Sites will be recorded with GPS coordinates and marked with a permanent stake. Photographs will be taken both vertically and horizontally across landscape and plant species composition will be recorded. Special attention will focus on Canada thistle stem count information in affected areas. Six replicate point count surveys will be conducted at the permanently-marked monitoring sites and additional points as needed, over the course of the 2014 breeding season (May – July), in order to fully describe the breeding bird community on treatment sites. One standardized roadside Long-billed Curlew survey will be conducted in the landscape surrounding the treatment sites, during each replicate visit.

**Financial Information**

**ATTACHMENT: Project Budget – Using the standard project budget format that is available on the website at <http://www.nd.gov/ndic/outdoor-infopage.htm> , please**

**include a detailed total project budget that specifically outlines all the funds you are requesting.\***

The project budget should identify all matching funds, funding sources and indicate whether the matching funds are in the form of cash or in-kind services. As noted on the standard project budget format, certain values have been identified for in-kind services. Please utilize these values in identifying your matching funds. **NOTE: No indirect costs will be funded.**

■ I certify that a project budget will be sent to the Commission\*

**Sustainability – Indicate how the project will be funded or sustained in future years. \***

Include information on the sustainability of this project after all the funding from the Outdoor Heritage Fund has been expended and whether the sustainability will be in the form of ongoing management or additional funding from a different source.

This project will almost definitely continue beyond the 2015 growing season. The equipment purchased with this grant request should have productive life of more than 10 years. As the advantages of applying domestic livestock herbivory to the management of these lands become better understood, it is likely that managed grazing could be extended on up to 2,000 additional acres of currently idle land that is managed by either the North Dakota Game and Fish Department or the US Army Corps of Engineers. The portable solar water station could be used anywhere along the streams and lake shoreline of this water system and the portable electric fence can quickly create new pastures wherever needed to enhance the vegetation in future years.

The sustainable benefit to the land will be the reduction of noxious and invasive plant species resulting from inhibited seed production and increased stress on invasive plant root systems. Thus, allowing native plants to compete more efficiently. Increased health and vigor of the native plant community will improve its ability to resist the re-invasion by Canada thistle and other noxious weed species.

**Partial Funding – Indicate how the project will be affected if less funding is available than that requested. \***

If the project is funded at less than requested, we will seek other funding sources to meet the financial requirements of the project.

## **Scoring of Grants**



All applications will be scored by the Outdoor Heritage Fund Advisory Board after your ten-minute oral presentation. The ranking sheet(s) that will be used by the Board is available on the website at <http://www.nd.gov/ndic/outdoor-infopage.htm> .

## **Awarding of Grants**

All decisions on requests will be reported to applicants no later than 30 days after Industrial Commission consideration. Applicants whose proposals have been approved will receive a contract outlining the terms and conditions of the grant. Please note the appropriate sample contract for your organization on the website at <http://www.nd.gov/ndic/outdoor-infopage.htm> that set forth the general provisions that will be included in any contract issued by the North Dakota Industrial Commission. Please indicate if you can meet all the provisions of the sample contract. If there are provisions in that contract that your organization is unable to meet, please indicate below what those provisions would be. \*

## **Responsibility of Recipient**

The recipient of any grant from the Industrial Commission must use the funds awarded for the specific purpose described in the grant application and in accordance with the contract. The recipient cannot use any of the funds for the purposes stated under Exemptions on the first page of this application.

If you have any questions about the application or have trouble submitting the application, please contact Karlene Fine at 701-328-3722 or [kfine@nd.gov](mailto:kfine@nd.gov)

## Budget Standard Form

Please use the table below to provide a detailed total project budget that specifically outlines all the funds you are requesting and if there are any matching funds being utilized to fund this project. Please note if the matching funds are in the form of cash, indirect costs or in-kind services. The budget should identify all other committed funding sources and the amount of funding from each source. Match can come from any source (i.e. private sources, State and Federal funding, Tribal funding, etc.) Note match funding is not required but an application will be scored higher if match funding is provided. (See Scoring Form.)

Please feel free to add columns and rows as needed. Please include narrative to fully explain the proposed budget.

Note that NO INDIRECT COSTS will be funded from the Outdoor Heritage Fund.

Project Expense	OHF Request	Applicant's Match Share (Cash)	Applicant's Match Share (In-Kind)	Applicant's Match Share (Indirect)	Other Project Sponsor's Share (in-kind)
Solar Water System	\$11,000.00	\$	\$	\$	\$
Electric Fence Chargers	\$750.00	\$	\$	\$	\$
Electric Fence wire	\$896.00	\$	\$	\$	\$
Electric fence posts	\$944.00	\$	\$	\$	\$
Travel for bird monitoring	\$495.00	\$	\$	\$	\$
Travel for fence installation		\$	\$198.88	\$	\$614.72
Labor for fence installation/relocation			\$600		\$600.00
Labor for vegetation monitoring			\$675.00		
Travel for livestock training			\$271.20		
Labor for livestock training			\$180.00		
Labor for grazing planning					\$120.00
Labor for Bird monitoring					\$600.00
Labor for herding, fence maintenance					\$900.00
Labor for Water System maintenance			\$450.00		\$450.00
Existing Solar water station					7500.00
Existing Electric Fence material					2000.00
<b>Total Project Costs</b>	<b>\$14,085.00</b>	<b>\$</b>	<b>\$2,375.08</b>	<b>\$</b>	<b>\$12,784.72</b>



## Budget Narrative:

Funds requested in this grant application will be used for purchase of a portable solar water pump and tank and portable electric fence materials and for travel for a grassland bird monitoring technician from Hettinger to the project area at Bowman Haley Dam.

In-kind values are provided for travel and for labor and technical expertise of collecting vegetative and wildlife monitoring information.

### Cost of Items in OHF Fund Request (see attached pdf files for quotes):

- Solar West 500 Portable Water Station: \$11,000.00 (sale price)
- Two Electric Fence Chargers\*: 2- SX1 Stafix Solar Electric Fence Energizers quote from Powerflex Fence: \$375 each; total cost = \$750.00
- Electric Fence wire: 8 rolls of Powerflex polybraid wire (2640'/roll) for \$112/roll = \$896.00
- Electric fence posts: 320 step-in "pigtail" posts @ \$2.95 each = \$944.00
- Travel for monitoring for Cheryl Mandich: From Hettinger 150 mile round trip (commute plus Long-billed Curlew road survey) x 6 trips X \$0.55/mile = \$495.00

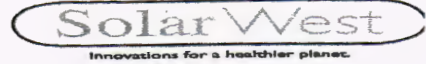
### In-Kind Sources and Calculations:

- Travel for monitoring (in-kind provided by Bowman Co. Weed Board)  
From Bowman 44 mile round trip x 8 trips X \$0.565/mile = \$198.88
- Travel for fencing (in-kind provided by Bowman Co. Weed Board and ND Game & Fish Dept.)  
From Bowman: 44 mile round trip x 8 trips X \$0.565/mile = \$198.88  
From New England: 136 mile round trip x 8 trips x \$0.565/mile = 614.72
- Labor for fence installation/relocation: (in-kind provided by Bowman Co. Weed Board)  
40 hours x \$15/hr = \$600.00
- Labor for fence installation/relocation: (in-kind provided by ND Game and Fish Dept.)  
40 hours x \$15/hr = \$600.00
- Labor for cattle herding, fence maintenance: (in-kind provided by livestock cooperator)  
60 hours x \$15/hr = \$900.00
- Labor for water system maintenance and relocation: (in-kind provided by ND Game & Fish)  
30 hours x \$15/hr = \$450.00
- Labor for water system maintenance and relocation: (in-kind provided by Bowman Co. Weed Bd)  
30 hours x \$15/hr = \$450.00
- Labor for vegetation monitoring: (in-kind provided by Bowman Co. Weed Board and USDA NRCS)  
45 hours x \$15/hr = \$675.00
- Labor for grassland bird monitoring: (in-kind provided by American Bird Conservancy)  
40 hours x \$15/hr = \$600.00
- Travel for livestock training: (in-kind provided by Bowman Co. Weed Board)  
From Bowman: 80 mile round trip x 6 trips X \$0.565/mile = \$271.20
- Labor for livestock training: (in-kind provided by Bowman Co. Weed Board and a livestock cooperator)  
12 hours x \$15/hour = \$180.00
- Labor for drafting grazing plan agreement (in-kind provided by US Army Corps of Engineers)  
8 hours x \$15/hour = \$120.00

- Existing Solar Powered Water Station (in-kind provided by ND Game & Fish Dept.)
  - Value of \$7,500.00
- Existing Electric Fence Materials (in-kind provided by ND Game & Fish Dept.)
  - Value of \$2,000.00



**SolarWest 500 Portable Water Station**



**Customer Information**

Season	365 Days
Lift	
Trough	SW500
Animals	
Water Source	Dugouts/Wells
Name	
Contact	
Fax	

- Model #151 Items Supplied With System**
- 1 Heavy Duty Trailer (mobile)
  - 1 500 Gallon Heavy Plastic Trough
  - 1 PS 150 Pump
  - 2 130 Watt Solar Panel
  - 1 Double Panel Rack
  - 1 15' panel cord
  - 1 Heavy Duty Battery Box
  - 1 Deep Cycle Battery
  - 1 75' suction hose and cord
  - 1 Wiring Package (Plug & Play)
  - 1 Float Switch
  - 1 Regulator c/w Low Volt Disconnect
  - 1 Wind Charger (mounted)

Water consumption 25Gal/Cow-Calf/day

**Pumping Specs PS150 Pump**

Panel Watts	Total Lift	USG/Minute	US Gals/Day	Cow/calf Pairs
260	20	19	4947	198
260	30	17	4546	182
260	75	8	2270	91

Price \$13,150.00 FOB  
 Wind charger will increase capacity by 60%

There are some guys out there that do not include all of the equipment that we do in our systems.

*Our Systems are built on quality & reliability, you will not be disappointed with our Solar West product.*

You have to compare apples to apples when you are getting prices from different companies



- Warranty**
- Electrical 1 Year Limited
  - Pump 5 Year Limited
  - Solar Panels 25 Year Prorated
- Available Options**
- Fencer Converter
  - Extra Hose and Cord

A) I will sell it for

\$11,000.00

B) plus tax

C) no shipping charges

Solar West Inc PO Box 150, 221-5th Ave, St. Brleux SK S0K3V0  
 Tel 1-877-275-9779 Fax (306) 275-4720 www.solarwest.ca

Search...



Home > PowerFlex Polybraid >

### PowerFLex PolyBraid Mixed Metal 2640'



+ Larger Photo

With 6 strands of stainless steel and 3 strands of tinned copper conductors, it will maintain voltage over long distances.  
Our Price: \$112.00

Qty:

Add to cart >

☆ Add to Wish List

Product Code: PBSC8

#### Fencing Products

- Fence Posts
- Wire
- Insulators
- Gripples
- Tensioners
- PowerFlex Polybraid
- Horse Fencing
- Accessories

#### Watering Products

- HDPE Water Pipe
- Water Pipe Fittings
- Tanks
- Reels

#### Energizers

- Dual
- Mains
- Portable & Solar Energizers
- Lightning Protection

#### Tools

- Fence Tools
- Management Tools
- Specialty Tools

#### Miscellaneous

- Books & CDs
- Ironworks

#### Description

Temporarily SOLD OUT! Available Mid August.

A good choice for strip grazing, especially if you have long lengths. With 6 strands of stainless steel and 3 strands of tinned copper conductors, it will maintain voltage over long distances.

Available in both 9 strands of stainless steel conductors (for strength, durability and longevity) or mixed metal with 6 strands of tinned copper conductors (for maximum conductivity over long distances.) and 3 strands of stainless steel conductors. Both types reel up great and are easy to handle with a reel. A 1320' roll will fit on a standard O'Brien reel, with room to spare. We have designed this polybraid with portability in mind for strip grazing purposes. It will perform for you.

If you would like a sample of this new PolyBraid – just give us a call and we'll be happy to mail you a sample piece for your evaluation – before you buy. If you are progressive grazer, then you will appreciate the quality of this polybraid. We feel that it should give you a good 5+ years of constant heavy usage in the "real world environment" for portable cross fences and strip grazing.

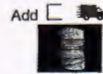
If just put up and left up we expect it to last 10 years +. This product has a breaking point of about 300#, which is TWO TIMES stronger than normal twisted types of polywire that you will find in most farm stores. Another feature we like about our "Braided" PolyBraid is that just by the nature of the braiding process, there is continual overlap of conductors – allowing current to flow unimpeded even when you have individual wires break. And, hey, lets face it – polywire products are not perfect! All poly wire products will wear out eventually, especially when you are moving it daily or very often. Its temporary and portable fencing, but a very effective tool. If it lasts you 10 years then that's a bonus and you got good use out of it.

#### Related Products...

PolyBraid Rope (Gold)  
Our Price: \$195.00



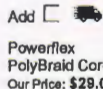
PowerFlex PolyBraid Mixed Metal 1320'  
Our Price: \$58.00



PowerFlex PolyBraid Stainless 1320'  
Our Price: \$49.00



PolyBraid Rope (Silver) 1320'  
Our Price: \$150.00



Powerflex PolyBraid Cord  
Our Price: \$29.00

Like

PowerFlex Fence | Create Your Badge



Share your knowledge of this product with other customers... Be the first to write a review

Browse for more products in the same category as this item:  
PowerFlex Polybraid



Search...

Search

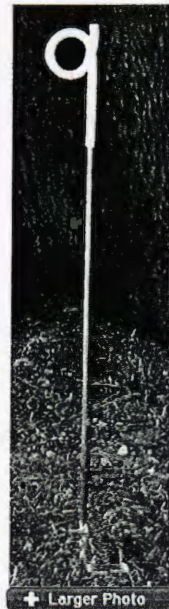
Home >> Pig Tail Post (White)

Our Price: \$2.95

Product Code: PTP

Call for Shipping Information

★ Add to Wish List



Larger Photo

Like { 0 }

Description

The pigtail post is the choice for most cattlemen who are strip grazing and moving fence every day. They are about as easy as any to use and handle. Handling is important when you are moving them every day. White insulated pigtail wire holder on a galvanized shaft. The overall length of the post is 39" with 32" above ground. Ships FOB

Fencing Products

- Fence Posts
- Wire
- Insulators
- Gripples
- Tensioners
- PowerFlex Polybraid
- Horse Fencing
- Accessories

Watering Products

- HDPE Water Pipe
- Water Pipe Fittings
- Tanks
- Reels

Energizers

- Dual
- Mains
- Portable & Solar Energizers
- Lightning Protection

Tools

- Fence Tools
- Management Tools
- Specialty Tools

Miscellaneous

- Books & CDs
- Ironworks

PowerFlex Fence | Create Your Badge



Related Products...

PowerTredin Post, White Box of 50 Our Price: \$137.50

Add



PowerTredin Post, White Our Price: \$2.85

Add



Pig Tail Post (White) Box of 50 Our Price: \$142.50

Add



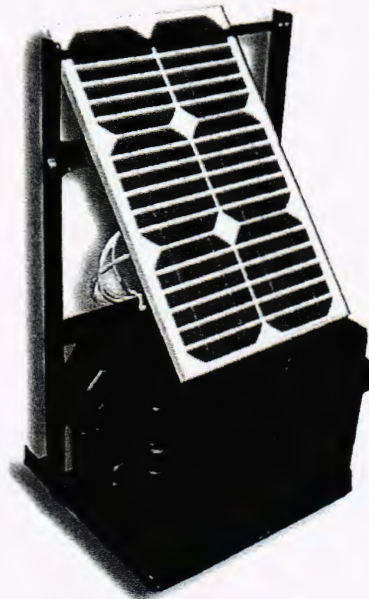
PowerPost Reel Stand & Multi-Function Post Our Price: \$114.00

Add

Search...



Home > Portable & Solar Energizers > SX1 Stafix Solar Energizer



1.0 Output of Joules, 1.3 stored energy of joules. 10 watt solar panel with blocking diodes. Our Price: \$376.00

Please Call 417-741-1230 for ordering information.

Add to Wish List

Product Code: SX1SOLAR-10W

Fencing Products

- Fence Posts
Wire
Insulators
Gripples
Tensioners
PowerFlex Polybraid
Horse Fencing
Accessories

Watering Products

- HDPE Water Pipe
Water Pipe Fittings
Tanks
Reels

Energizers

- Dual
Mains
Portable & Solar Energizers
Lightning Protection

Tools

- Fence Tools
Management Tools
Specialty Tools

Miscellaneous

- Books & CDs
Ironworks

PowerFlex Fence | Create Your Badge



+ Larger Photo

Like 0

Description

1.0 Output of Joules, 1.3 stored energy of joules. 10 watt solar panel with blocking diodes. Heavy duty metal mounting frame. All weather battery case. Ships FOB

Related Products...

Stafix AN90
Sale Price: \$73.60

Add to cart



SX Stafix Solar Energizer 2 (.50 output joules)
Our Price: \$328.00

Add to cart



Stafix AN90 (Energizer with stake)
Sale Price: \$89.00

Add to cart

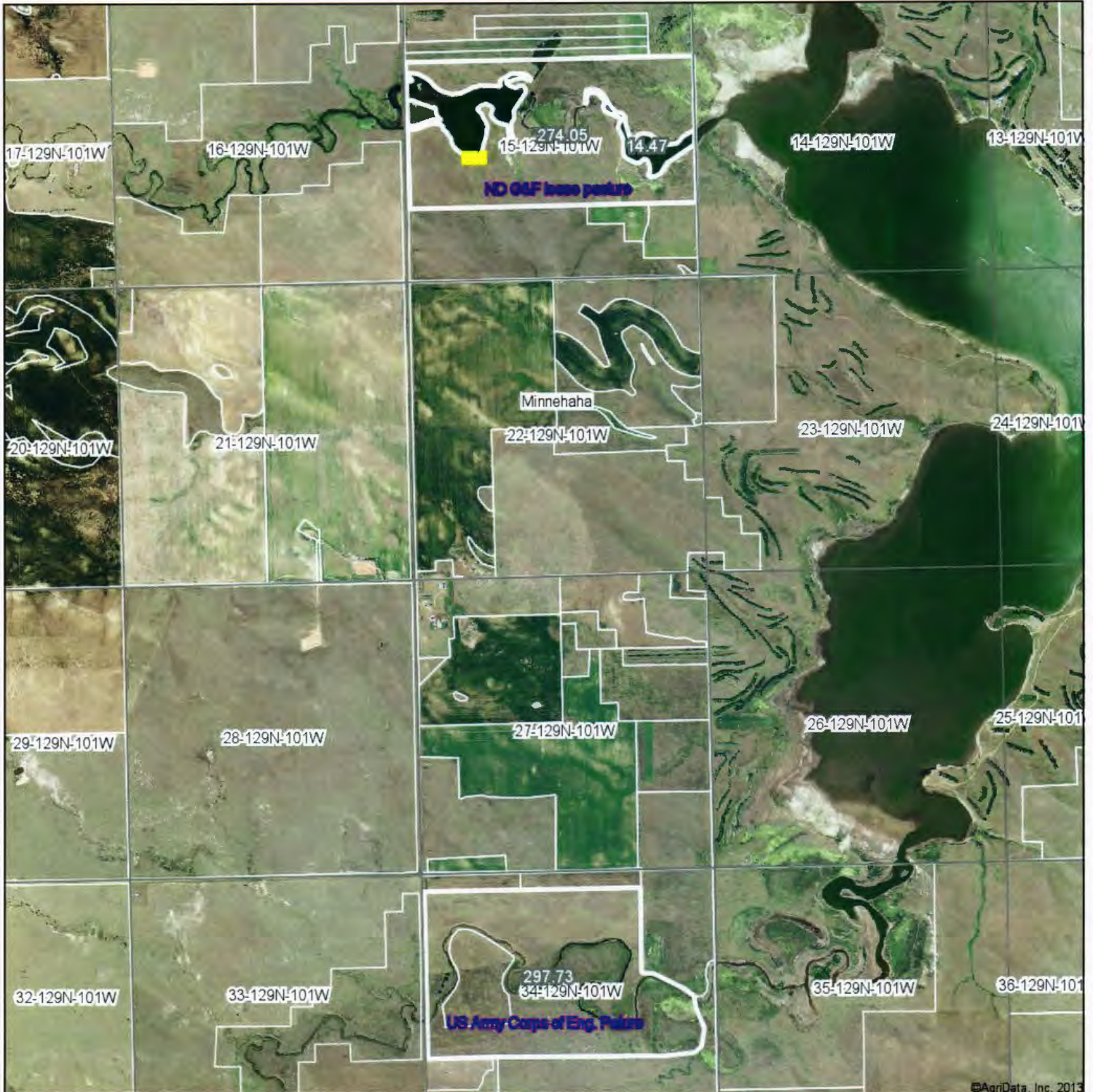


Share your knowledge of this product with other customers... Be the first to write a review

Browse for more products in the same category as this item:



# Aerial Map



©AgriData, Inc. 2013

map center: 45° 58' 31.95, 103° 17' 51.94

scale: 32096



11/25/2013

**22-129N-101W**  
**Bowman County**  
**North Dakota**

Maps Provided By:



© AgriData, Inc. 2013