

TO: Karlene Fine
Industrial Commission
State Capitol 14th Floor
600 E. Boulevard Ave. Dept. 405

FROM: Greg Smith
Bismarck Parks & Recreation District, Operations Director

DATE: November 20, 2014

RE: OUTDOOR HERITAGE FUND GRANT
Trailhead/Neighborhood Park Progress Report

Karlene,

In regard to the Outdoor Heritage Fund Grant, Trailhead/Neighborhood Park in northeast Bismarck, the Bismarck Parks & Recreation District (BPRD) designed and prepared all of the design details and bid documents with the assistance of a professional consultant, David Mayer, employed by Kadrmas, Lee, and Jackson (KLJ). The project was put out for bid in July and only one bid was secured and it was more than 100% over the cost estimate. Due to the rapid growth in Bismarck, construction costs are extremely high this construction season. BPRD proceeded with portions of the project that were reasonable and will plan to bid out the remainder of the project in late winter for an early spring construction.

BPRD secured through a bid process the grading work for the park, as part of another larger trail project in the area. The grading is now complete, including the parking area, trail connection and generally levelling of the site. The trail has now been paved as part of the larger project including funds from the T.A.P. and Rec Trails Program. The trail continues through the park area, and is now complete.

In addition, BPRD has bid out the playground project, as the playground industry has their own vendors and installers. BPRD received bids for the playground on Tuesday, August 12, and the bids were just under the estimate for that portion of the project. The project was awarded and ordered and the playground and picnic shelter was installed this fall. Installation of the fabric shade material will occur when the installer is back in the Bismarck area and when weather permits.

BPRD has also worked with a local community garden group, who has submitted for and received a matching grant to bring water from the street to the community gardens location so that the community gardens might be ready for planting next spring. Sealed quotes were opened on November 6th and the work awarded to Weisz & Sons. The water service installation should be completed prior to the 2015 growing season.

The remainder of the work scheduled for the spring will include all concrete and paving work, the installation of the pickleball courts and the addition of any additional site amenities and interpretive signs.

A nationally accredited park and recreation agency.



FUTURE INTERPRETIVE
OVERLOOK




FUTURE PICKLEBALL
COURTS

SHARED USE
TRAIL


PLAY AREA

COMMUNITY GARDENS

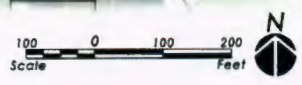
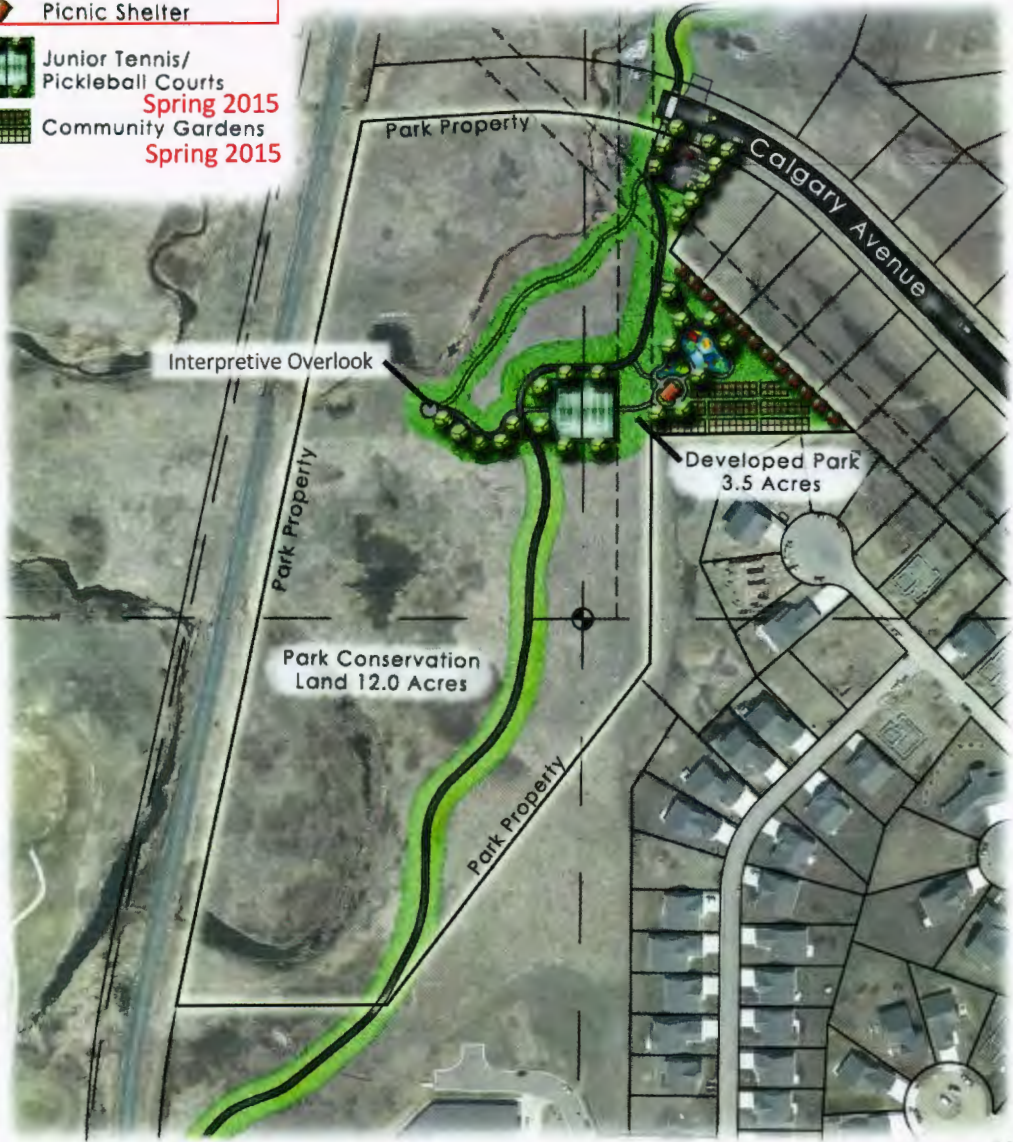


- Legend**
-  5-12 Age Playground
 -  2-5 Age Playground
 -  Picnic Shelter

Fall 2014

-  Junior Tennis/
Pickleball Courts
-  Community Gardens

Spring 2015
Spring 2015



Trailhead/Neighborhood Park - Concept Plan
 Bismarck, North Dakota
 11.20.2013

