

Grand Forks River Access Project Update:

The downtown river access would enhance the Boathouse project that is being implemented by Ground UP Adventures, a 501(c)3 nonprofit group with the goal of building stronger, healthier youth through adventure-based activities.

The initial plan was to place a concrete stairway with platforms and a removable railing at the site right below the Boathouse. After further review of the area, the local consultant, CPS, Ltd proposed a site a few hundred feet from the Boathouse. This site was recommended as it would allow us to work with the existing bank making the access ADA accessible. One goal was to allow access to the river throughout the season with the adjusting levels of the water. Utilizing this site would allow all ages and abilities to access and enjoy the river. The attached plan addresses how the site could expand in the future. Right now the goal is to implement Phase I of the project.

The Red River Boathouse will open this fall. The boathouse will act as the center for human-powered watersports and recreation on the Red River of the North, right in downtown Grand Forks, ND. This facility will serve the community by providing access to rental canoes, kayaks, and stand-up paddleboards (SUPs), as well as training in the safe and responsible use of these boats on the river.

The Boathouse project has a number of partners, including the City of Grand Forks. The City of Grand Forks owns the land which they are leasing to Ground Up Adventures. The City wants to enhance the river access to the floating dock to support the goal of getting more people safely to and on the river. The total project costs for the river access are still estimated at \$100,000.

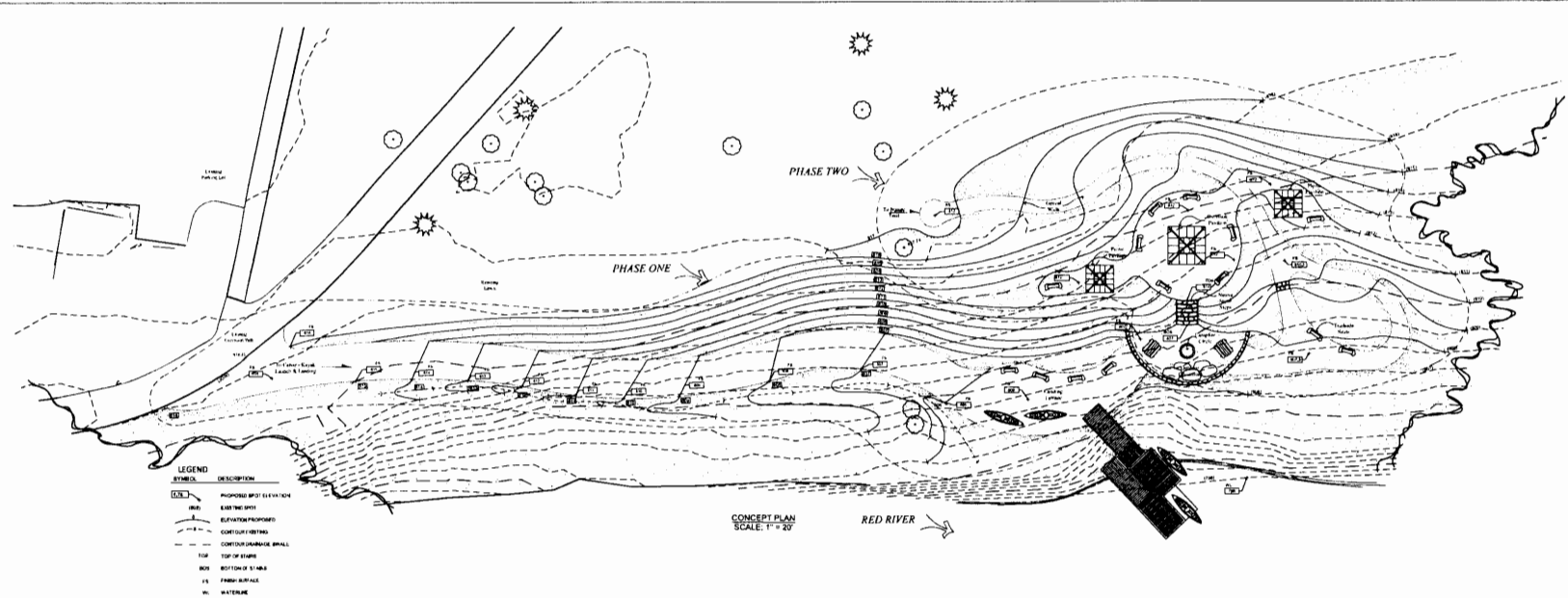
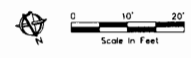
Submitted by: Melanie Parvey, Water Works Division Director

City of Grand Forks

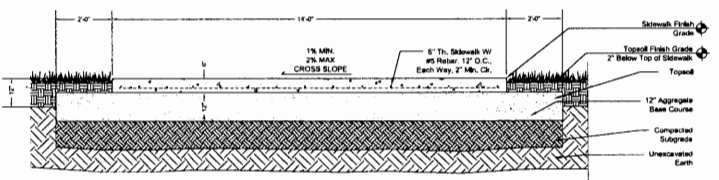


CIVIL ENGINEERING | PLANNING | SURVEYING
 308 2nd Avenue North | Grand Forks, ND 58203
 P: 701.746.7459 | F: 701.746.8948
 www.cpsengineering.net

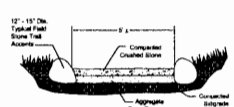
NO.	DATE	BY	DESCRIPTION OF REVISIONS



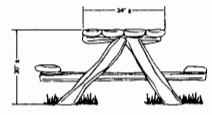
- NOTES**
1. Concrete walkways & slabs shall have 1% min. to 2% max. cross slope for drainage.
 2. Sidewalk to have a broom finish perpendicular to path of travel.
 3. Control joints occur at intervals equal to the width of slabway.
 4. Saw cut control joints 1/2" wide x 2" deep shall be made within 12 hours of concrete placement.
 5. Expansion joints with elastomeric expansion material shall be located at 50' intervals along slabs.
 6. 80 #D wall re. shall be placed along all edges of concrete slabs, extending outward 2'-0" min. finished grade shall be set 2" below slab elevation and slope 2% max. away from slab.
 7. Provide 2" min. conc. cover over all rebar / reinforcing steel (if indicated).
 8. Contractor to form and place concrete for curbs, slabs, and aprons as indicated on plan.
 9. Contractor to locate and verify all underground utilities prior to digging.



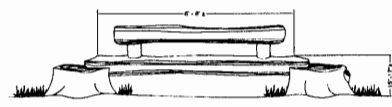
Standard Sidewalk Detail
Not To Scale



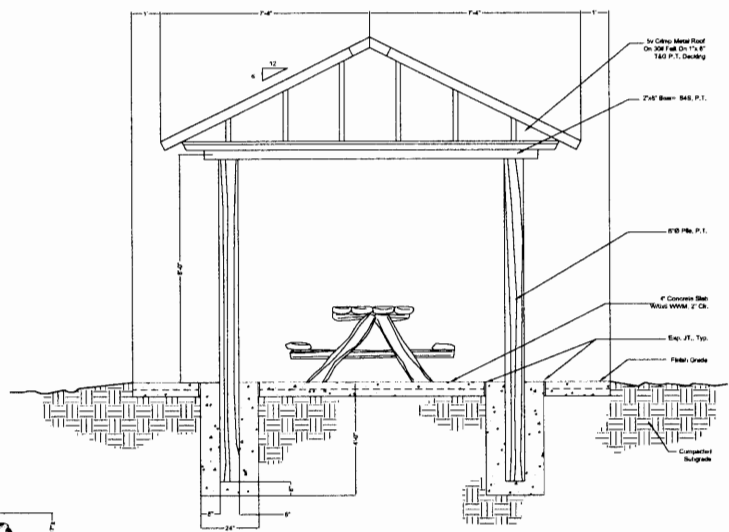
Standard Nature Trail Detail
Not To Scale



Standard Trailside Table
Not To Scale



Standard Trailside Seat
Not To Scale



Standard Overlook / Picnic Shelter Elevation
Not To Scale

RED RIVER CANOE & KAYAK ACCESS

GRAND FORKS, ND

PREPARED FOR:
CITY OF GRAND FORKS
GRAND FORKS, ND

CONCEPTUAL PLAN

DRAWN BY RAG	DESIGNED BY	CHECKED BY	SHEET 8-25-14
CPS PROJECT NO. 14044	OWNER PROJECT NO.	DRAWING NO. L1.0	