

017-173 - Bakken Development and Working Lands Program II - 2020

Status Report Details

Funding Opportunity: 3515-Outdoor Heritage Fund September 2020 - Round 17
Program Area: Outdoor Heritage Fund
Status: Submitted
Status Report Number: 004
Status Report Type: Interim
Reporting Period: 12/01/2021 - 05/31/2022

Initial Submit Date: Aug 25, 2022 2:25 PM
Initially Submitted By: Jesse Beckers
Last Submit Date:
Last Submitted By:
Approved Date:
Approved By:

Contact Information

Primary Contact Information

Active User*: Yes
Type: External User
Name: Salutation **Jesse** Middle Name **Beckers**
First Name Last Name
Title: Energy Program Manager
Email*: jesse@naturalresourcestrust.com
Address*: 1605 East Capitol Avenue
Suite 101

Bismarck North Dakota 58501
City State/Province Postal Code/Zip
Phone*: 701-223-8501 Ext.
Phone
###-###-####
Fax: ###-###-####
Comments:

Organization Information

Status*: Approved
Name*: North Dakota Natural Resources Trust
Organization Type*: In-State Non-Profit
Tax Id: 363512179
Organization Website: <http://www.ndnrt.com>

Address*: 1605 E Capitol Ave
Suite 101

Bismarck North Dakota 58501-2102
City State/Province Postal Code/Zip

Phone*: (701) 223-8501 Ext.
#####

Fax: (701) 223-6937
#####

Benefactor:

Vendor ID: 0000004224

PeopleSoft Supplier ID: 0000004224

Comments:

Location Code: MAIN

SAM.gov Entity ID: 061907148

SAM.gov Name: North Dakota Natural Resources Trust Inc

SAM.gov Entity ID Expiration Date: 03/06/2021

State Issued ID:

Category #:

Year Begin:

Year Closed:

NCES#:

Restricted Indirect Cost Rate: 0.0%

Unrestricted Indirect Cost Rate: 0.0%

Document Approval

Level	Approved By	Approved Date	Approval	Comments
Interim Report				

Interim Report

Work Accomplished*:

Grazing systems in Bakken II have continued to be implemented since contracts were signed in 2021. Due to improvement in drought conditions across the west, interest in grass seedings has increased and several have been planted. Projects with the US Forest Service and Grazing Associations has begun and is currently underway, with planned projects being completed. Our partnership with the Department of Mineral Resources and Terracon have also completed site investigations for reclamation.

Certification

This report was prepared pursuant to an agreement with the Industrial Commission of North Dakota, which partially funded the project through the Outdoor Heritage Fund. Project participants, its subcontractors, and the Industrial Commission of North Dakota, or any person acting on its behalf, do not:

(A) Make any warranty or representation, express or implied, with respect to the accuracy, completeness, or usefulness of the information contained in this report, or that

the use of any information, apparatus, method, or process disclosed in this report may not infringe privately-owned rights; or
(B) Assume any liabilities with respect to the use of, or for damages resulting from the use of, any information, apparatus, method or process disclosed in this report.

Reference herein to any specific commercial product, process, or service by trade name, trademark, manufacturer, or otherwise, does not necessarily constitute or imply its endorsement, recommendation, or favoring by the Industrial Commission of North Dakota. The views and opinions of authors expressed herein do not necessarily state or reflect those of the Industrial Commission of North Dakota.

Do you agree?*: Yes

Photos

Description	File Name	Type	Size	Upload Date
Solar well and tank in Mercer County	S29 system 2.JPG	JPG	4 MB	08/25/2022 01:36 PM
Finished solar system with storage tank	Well house layout.JPG	JPG	4 MB	08/25/2022 01:37 PM
Electrical Conductivity readings for a reclamation site in Bottineau County. Site will be reclaimed by Terracon and be utilized in a rotational grazing system.	InkedTerracon site.jpg	jpg	111 KB	08/25/2022 01:42 PM
Site that was previously farmed to be planted to cover crops in 2022, and into a native and tame grass mix in 2023.	Cover Crop1.JPG	JPG	3 MB	08/25/2022 01:45 PM

Tasks Report

Tasks

Task	Start Date	Completion Date	Percent Complete	Comments
Promotion to landowners	01/01/2021	12/30/2022	100.0%	Promotion was completed in 2021 and all funds have been committed to private landowners.
Partner correspondence	09/01/2020	12/30/2022	90.0%	All projects including partnerships with the Forest Service and Department of Mneral Resources have been established. In process of finishing partnership projects.
Energy site restoration	01/01/2021	12/29/2023	25.0%	Site investigations and landowner agreements are nearly complete. Site reclamation is just beginning.
Contractor coordination	01/01/2021	12/29/2023	60.0%	Archaeological investigations have been completed for most of the projects. Working with contractors to provide technical assistance on grazing developments, grass and cover crop plantings, and monitoring.

Description of Tasks

Please Describe Tasks:

1. Contractors will be needed throughout the life of the project to complete soil testing, archaeological reviews, and earth moving activities. 2. Complete site assessments in coordination with NDDMR and landowners. 3. Constant communications with partners on status of activities, outreach to SCD's, and report writing to OHF. 4. Landowner workshops, shop talks, postcard mailings through SCD's, magazine articles, and convention attendance to promote program and the Outdoor Heritage Fund.

Deliverables Report

Deliverables

Deliverable	Quantity	Unit of Measurement, if applicable	Status
Cover Crop	1250	Acres	Have planted 1,867.35 acres for this reporting period.
Energy Site Reclamation	100	Acres	Sites have been reviewed on a total of 20 acres.
Grazing Systems	18000	Acres	Grazing systems have been implemented on 19,215 acres.
Native Grass	1500	Acres	322.2 acres of native grass seeding has been planted during this reporting field.
Tame Grass	1900	Acres	Have planted 1,756 acres of tame grass for this reporting period.

the 1990s, the number of people in the UK who are employed in the public sector has increased by 1.5 million (1990–1999) and the number of people in the public sector has increased by 2.5 million (1990–1999). The public sector has become a major employer in the UK, and its growth has been a major factor in the overall growth of the UK economy.

The public sector has also become a major provider of social services, and its growth has been a major factor in the overall growth of the UK economy. The public sector has become a major provider of social services, and its growth has been a major factor in the overall growth of the UK economy.

The public sector has also become a major provider of social services, and its growth has been a major factor in the overall growth of the UK economy. The public sector has become a major provider of social services, and its growth has been a major factor in the overall growth of the UK economy.

The public sector has also become a major provider of social services, and its growth has been a major factor in the overall growth of the UK economy. The public sector has become a major provider of social services, and its growth has been a major factor in the overall growth of the UK economy.

The public sector has also become a major provider of social services, and its growth has been a major factor in the overall growth of the UK economy. The public sector has become a major provider of social services, and its growth has been a major factor in the overall growth of the UK economy.

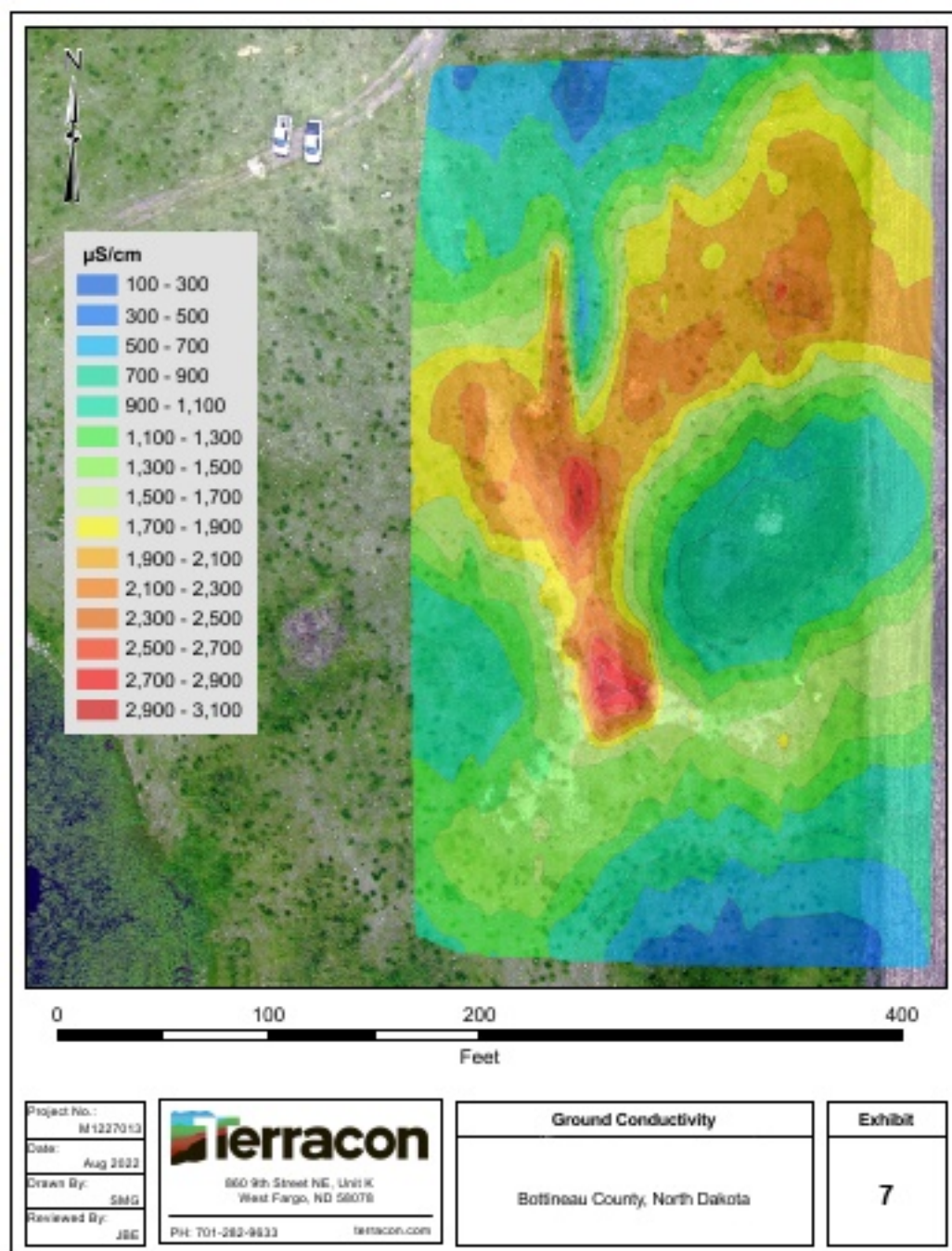
The public sector has also become a major provider of social services, and its growth has been a major factor in the overall growth of the UK economy. The public sector has become a major provider of social services, and its growth has been a major factor in the overall growth of the UK economy.

The public sector has also become a major provider of social services, and its growth has been a major factor in the overall growth of the UK economy. The public sector has become a major provider of social services, and its growth has been a major factor in the overall growth of the UK economy.

The public sector has also become a major provider of social services, and its growth has been a major factor in the overall growth of the UK economy. The public sector has become a major provider of social services, and its growth has been a major factor in the overall growth of the UK economy.

The public sector has also become a major provider of social services, and its growth has been a major factor in the overall growth of the UK economy. The public sector has become a major provider of social services, and its growth has been a major factor in the overall growth of the UK economy.





the 1990s, the number of people in the UK who are aged 65 and over has increased from 10.5 million to 13.5 million, and the number of people aged 75 and over has increased from 5.5 million to 7.5 million (Office for National Statistics 2000). The number of people aged 65 and over is projected to increase to 16.5 million by 2020, and the number of people aged 75 and over to 9.5 million (Office for National Statistics 2000). The increase in the number of people aged 65 and over is expected to be due to a combination of factors, including a decline in the birth rate, a decline in the death rate, and a decline in the rate of emigration (Office for National Statistics 2000). The increase in the number of people aged 75 and over is expected to be due to a combination of factors, including a decline in the birth rate, a decline in the death rate, and a decline in the rate of emigration (Office for National Statistics 2000).

The increase in the number of people aged 65 and over is expected to have a significant impact on the UK's health and social care system. The number of people aged 65 and over who are in need of health and social care services is expected to increase significantly in the coming years (Office for National Statistics 2000). This is due to a number of factors, including the fact that older people are more likely to have chronic health conditions, and are more likely to need long-term care (Office for National Statistics 2000). The increase in the number of people aged 65 and over is also expected to have a significant impact on the UK's economy. The number of people aged 65 and over who are in the workforce is expected to decline significantly in the coming years (Office for National Statistics 2000). This is due to a number of factors, including the fact that older people are more likely to be retired, and are more likely to have lower earnings (Office for National Statistics 2000).

The increase in the number of people aged 75 and over is also expected to have a significant impact on the UK's health and social care system. The number of people aged 75 and over who are in need of health and social care services is expected to increase significantly in the coming years (Office for National Statistics 2000). This is due to a number of factors, including the fact that older people are more likely to have chronic health conditions, and are more likely to need long-term care (Office for National Statistics 2000). The increase in the number of people aged 75 and over is also expected to have a significant impact on the UK's economy. The number of people aged 75 and over who are in the workforce is expected to decline significantly in the coming years (Office for National Statistics 2000). This is due to a number of factors, including the fact that older people are more likely to be retired, and are more likely to have lower earnings (Office for National Statistics 2000).

The increase in the number of people aged 65 and over is expected to have a significant impact on the UK's health and social care system. The number of people aged 65 and over who are in need of health and social care services is expected to increase significantly in the coming years (Office for National Statistics 2000). This is due to a number of factors, including the fact that older people are more likely to have chronic health conditions, and are more likely to need long-term care (Office for National Statistics 2000). The increase in the number of people aged 65 and over is also expected to have a significant impact on the UK's economy. The number of people aged 65 and over who are in the workforce is expected to decline significantly in the coming years (Office for National Statistics 2000). This is due to a number of factors, including the fact that older people are more likely to be retired, and are more likely to have lower earnings (Office for National Statistics 2000).

2020 Outdoor Heritage Fund (Bakken Working Lands) Projects

Dakota Prairie Grasslands



Introduction:

The Dakota Prairie Grasslands is comprised of four National Grasslands encompassing 1,259,000 acres; The Cedar River, the Grand River, the Sheyenne, and the Little Missouri National Grasslands. The Little Missouri National Grassland (LMNG) being the largest at 1,033,271 acres. The LMNG is comprised of two districts the Medora and McKenzie Ranger Districts. The LMNG is located in the counties of McKenzie, Billings, Golden Valley, and Slope.

Table of Contents

Introduction: 2

A. Pasture 4 & 6 Vegetation Management Project 3

B. Pastures 3 & 5 Vegetation Management Project II..... 7

C. Medora Grazing Association Range Improvements..... 10

D. Deep Creek Vegetation Management Part II 13

E. Cedar River National Grasslands Range/Wildlife Project..... 17

F. North Dakota Badlands Restoration (Juniper Removal Part II)..... 20

All Projects Summary 22

A. Pasture 4 & 6 Vegetation Management Project

Pastures 4 and 6 Vegetation Management project area is located on the McKenzie Ranger District of the Dakota Prairie Grasslands in the southcentral part of McKenzie County, North Dakota. The project area encompasses approximately 78,099 acres of National Forest System (NFS) lands and about 47,115 acres of state and private lands. The project area includes 20 grazing allotments that are under permit through a grazing agreement between the Forest Service and McKenzie County Grazing Association (MCGA).

This vegetation management project includes prescribed grazing strategies, installation of range infrastructure, and implementation of restoration activities designed to improve vegetation composition, vegetative structure, riparian conditions, wildlife resources, and wooded draw conditions across the project area.

The Pasture 4 & 6 Vegetation Management Project contains a large number of projects that have been identified to improve livestock grazing management and improve grasslands resource conditions across the project area. Due to the large number of projects it is expected that implementation will be ongoing over the next five to ten years. The projects will be prioritized by those projects with the greatest grasslands resource benefit.

The USFS and the McKenzie County Grazing Association and their members are the primary partners for this project.

Other potential partners: State Land Trust Department, North Dakota Game and Fish, the NDSU-Extension Service (Watford City), surrounding private landowners, Rocky Mountain Elk foundation, Mule Deer Foundation, National Wild Turkey Federation, Pheasants Forever, and the Wild Sheep Foundation.

Project Duration: The project decision was signed June 2020, and implementation is expected to begin spring 2021. Funds would be committed to the projects at that time and would be utilized within three years.

Amount of Grant request: \$340,000

Partner Contributions	Cash/In-Kind Services
USFS (Conservation Practices Funds)	\$130,000 Cash
USFS	\$40,000 In-Kind
McKenzie County Grazing Association	\$130,000 Cash
McKenzie County Grazing Association	\$40,000 In-Kind
Total Cash/In Kind Match	\$340,000

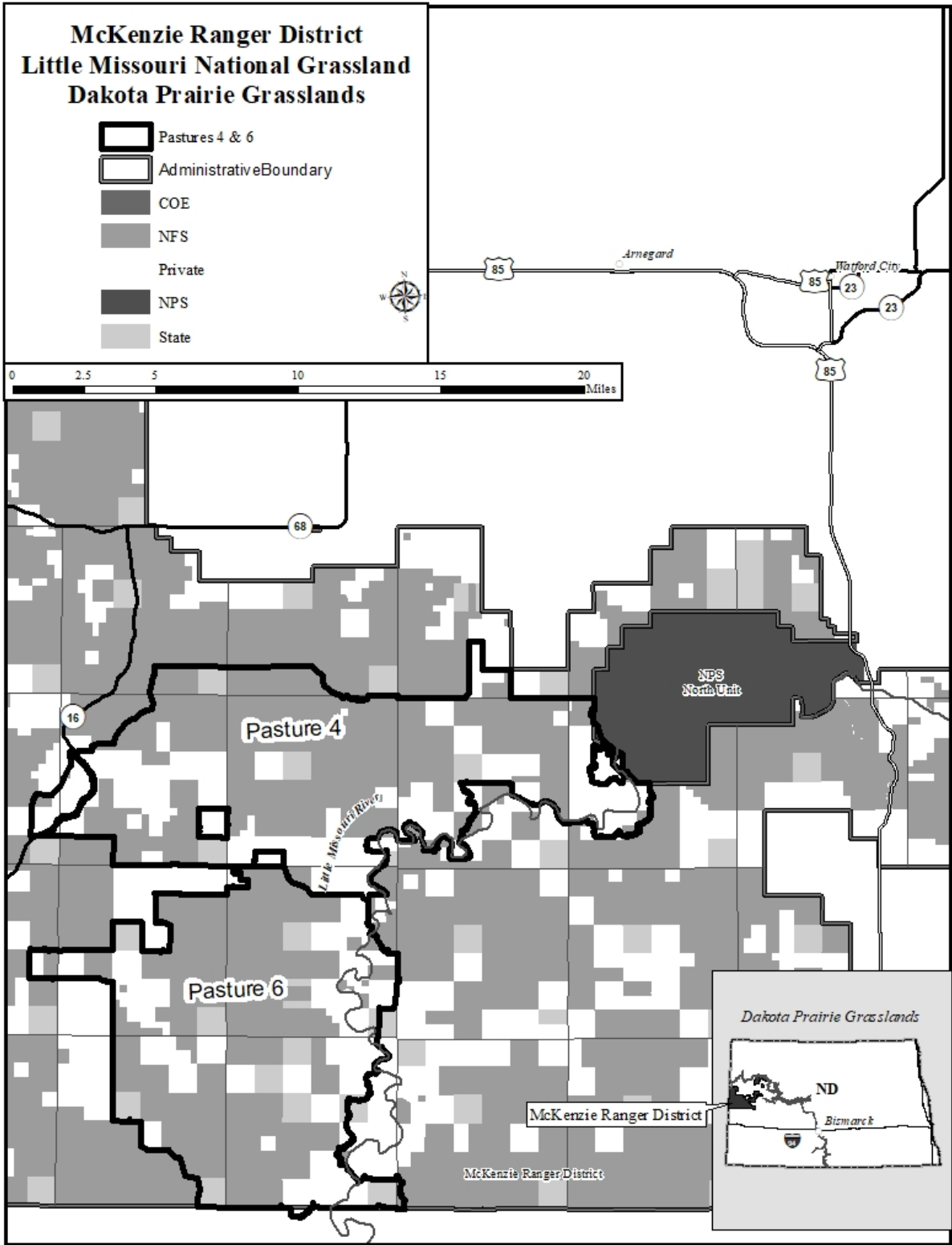
Summary of All Projects in the Pasture 4 and 6 Project Area:

Project Type	Quantity Estimate	Acres Affected	Total Cost
Range Water Pipeline & 35 tanks (2 tank relocation)	178,443 ft	21,225	\$473,290
Permanent and Electric Fence	46,200 ft	10,020	\$94,710
Stock Dam	1	500	\$20,000
Drill Stock Water Well	4		\$80,000
Stock Dam Reclamation	2	1,000	\$10,000
Shelter Belt Development	1	40	\$2,000
Total		31,785	\$680,000

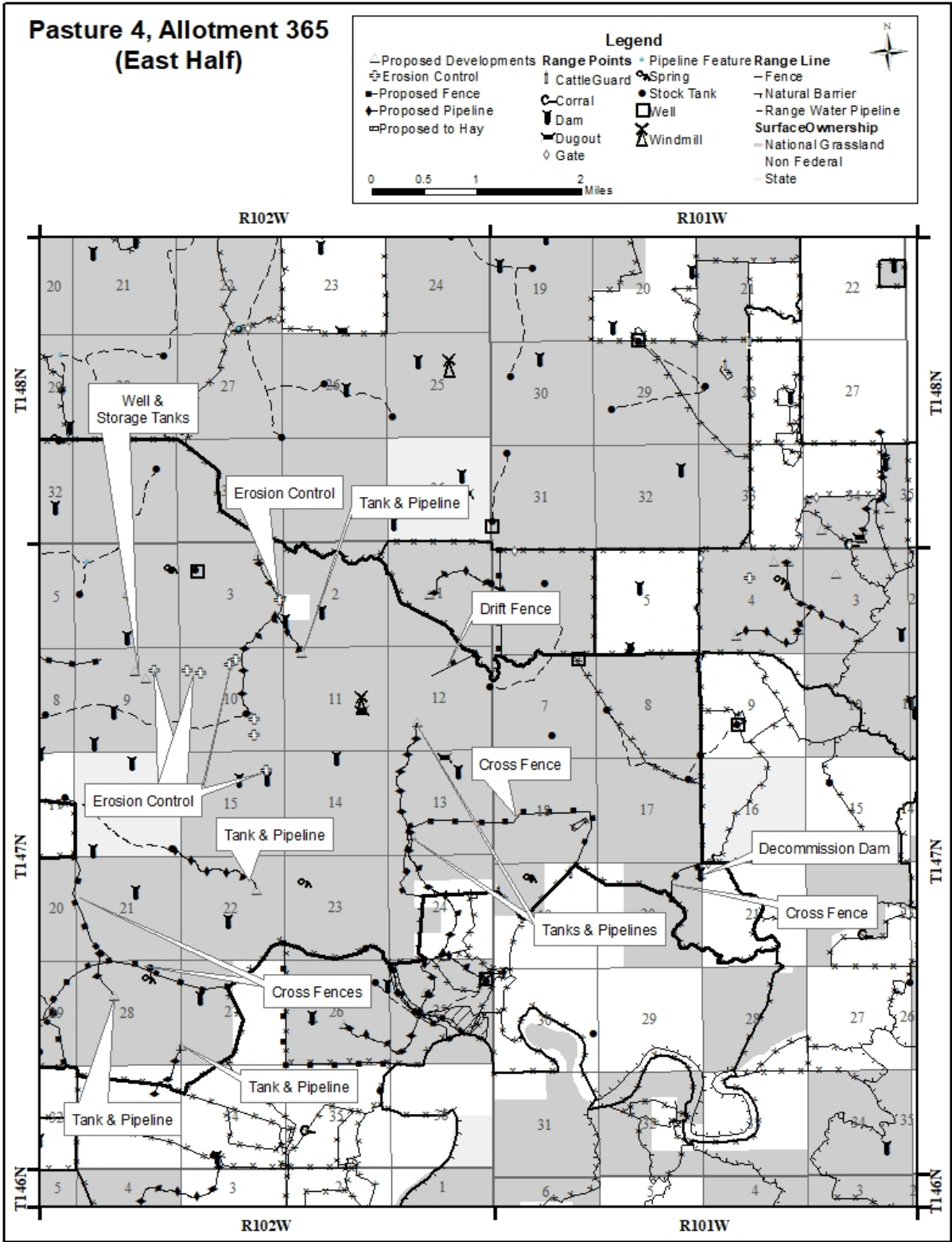
Pastures 4 & 6 Vegetation Management Project: Proposed Initial Actions

Pasutre-Allotment	Project Name	Estimated Footage	Acres Affected	Estimated Project Cost
P4-A365	Pipeline & Stock Tanks Section 31 and 32	6,800	1,000	\$19,300
P4-A365	Pipeline & Stock Tank Section 34,	5,300	500	\$13,925
P4-A365	Pipeline & Stock Tanks Section 1 and 2	7,100	1,000	\$19,975
P4-A365	Drill Well Section 7		0	\$40,000
P4-A365	Drill Well Section 9		0	\$40,000
P4-A365	Drift Fence Section 12	2,400	1,000	\$4,800
P4-A367	Pipeline & Stock Tanks Section 25 and 26	13,700	1,000	\$32,825
P4-A367 & 368	Cross Fence Allotment Boundary	11,700	1,000	\$23,400
P4-A367	Cross Fence Cedar Creek Section 25	11,300	200	\$22,600
P4-A368	Pipeline & Stock Tank in Section 4	6,100	500	\$15,725
P4-A371	Pipeline & Stock Tank in Section 34	250	500	\$2,563
P4-A372	Pipeline & Stock Tank Section 36	3,600	500	\$10,100
P4-A374	Pipeline & Stock Tank Section 29	5,500	500	\$14,375
P4-A375	Pipeline & Stock Tank Section 12	725	500	\$3,631
P4-A375	Pipeline & Stock Tank Section 1	4,100	500	\$11,225
P4-A375	Pipeline & Stock Tank Section 4	5,100	500	\$13,475
P4-A376	Pipeline & Stock Tank SWSE Section 34	6,000	500	\$15,500
P4-A376	Pipeline & Stock Tank NESE Section 34	595	500	\$3,339
P6-A405	Pipeline & Stock Tank Section 34	3,100	500	\$8,975
P6-A408	Cross Fence Section 20	5,500	640	\$11,000
P6-A408	Pipeline & Stock Tank Section 24	1,400	500	\$5,150
P6-A408	Pipeline & Stock Tank Section 20	4,700	500	\$12,575
P6-A409	Pipeline & Stock Tank Section 12	6,500	500	\$16,625
P6-A512	Drill well Section 8		0	\$40,000
P6-A512	Drill well Section 15		0	\$40,000
P6-A512	Pipeline & Stock Tank Section 23	5,100	500	\$13,475
P6-A512	Pipeline system & Stock Tanks Section 6, 5, 4, 9, 8	27,900	3,000	\$74,775
P6-A512	Pipeline system & Stock Tanks 17, 7, 18, 16, 21	33,000	3,000	\$86,250
P6-A512	Pipeline system & Stock Tanks 5, 6, 7, 8	23,300	3,000	\$64,425
	Total			\$680,008

Pasture 4 & 6 Vegetation Management Project Area:



Example Allotment Proposed Improvements:



B. Pastures 3 & 5 Vegetation Management Project II

Pastures 3 and 5 Vegetation Management project area is located on the McKenzie Ranger District of the Dakota Prairie Grasslands in the southwest part of McKenzie County, North Dakota. The project area encompasses approximately 79,747 acres of National Forest System (NFS) lands and about 33,272 acres of state and private lands. The project area includes 32 grazing allotments that are under permit through a grazing agreement between the Forest Service and McKenzie County Grazing Association (MCGA).

This vegetation management project includes prescribed grazing strategies, installation of range infrastructure, and implementation of restoration activities designed to improve vegetation composition, vegetative structure, riparian conditions, wildlife resources, and wooded draw conditions across the project area. The Pasture 3 & 5 Vegetation Management Project contains a large number of projects that have been identified to improve livestock grazing management and improve grasslands resource conditions across the project area. Due to the large number of projects it is expected that implementation will be ongoing over the next five to eight years. The projects will continue to be prioritized by those projects with the greatest grasslands resource benefit.

The USFS and the McKenzie County Grazing Association and their members are the primary partners for this project.

Other potential partners: State Land Trust Department, North Dakota Game and Fish, the NDSU-Extension Service (Watford City), surrounding private landowners, Rocky Mountain Elk foundation, Mule Deer Foundation, National Wild Turkey Federation, Pheasants Forever, and the Wild Sheep Foundation.

Project Duration: The project decision was signed in September 2018 and implementation began spring of 2019. Funds would be committed to the remaining projects and would be utilized within three years.

Amount of Grant request: \$230,000

Partner Contributions	Cash/In-Kind Services
USFS (Conservation Practices Funds)	\$80,000 Cash
USFS	\$45,000 In-Kind
McKenzie County Grazing Association	\$80,000 Cash
McKenzie County Grazing Association	\$25,523 In-Kind
Total Cash/In-Kind Services	\$230,000

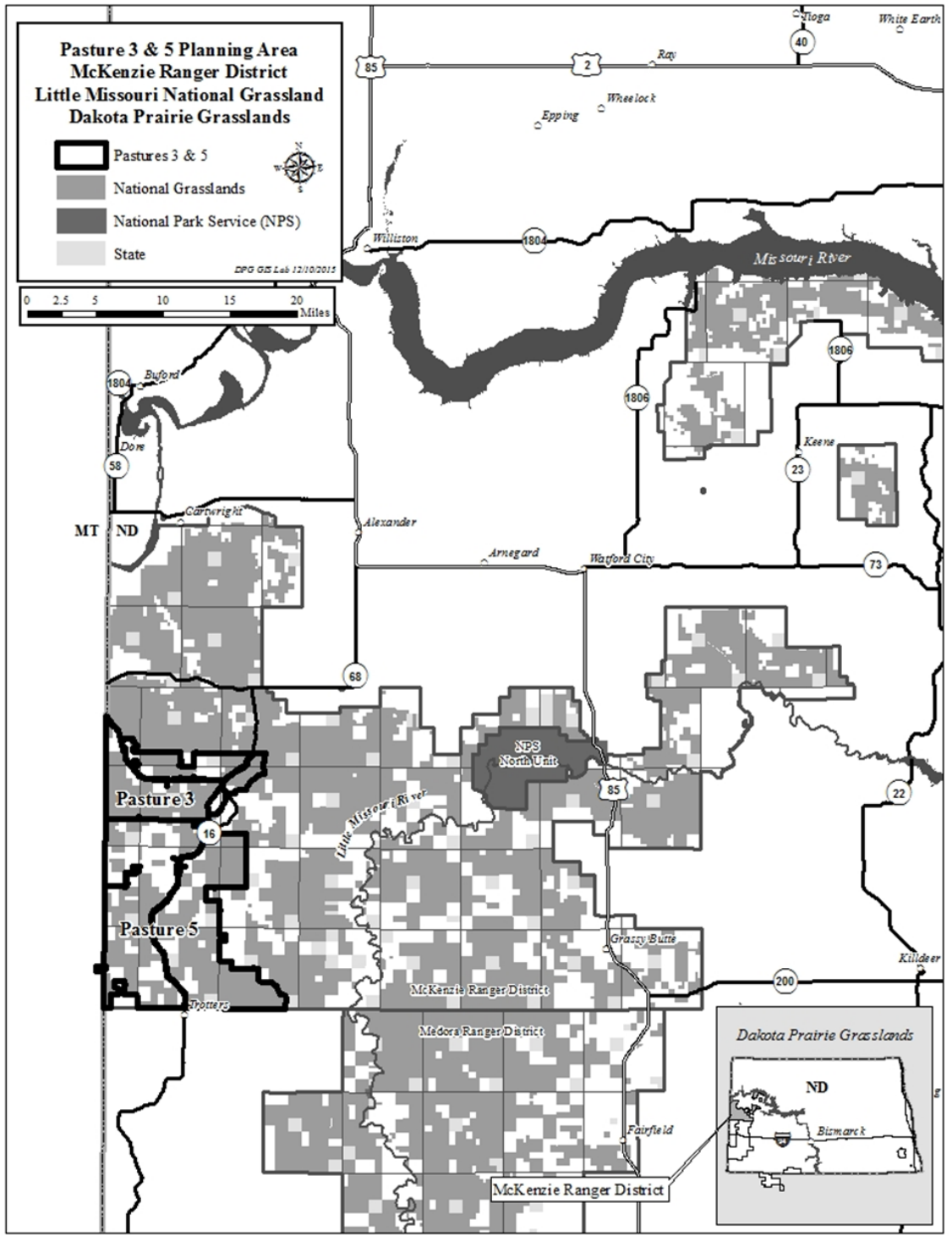
Summary of All Projects in the Pasture 3 & 5 Project II Area:

Project Type	Quantity Estimate	Acres Affected	Total Cost
Range Water Pipeline & tanks	69,432 ft	18,500	\$318,222
Permanent Fence	7,200 ft	700	\$20,520
Electric Fence	1,425 ft	500	\$1,781
Drill Stock Water Well	3		\$120,000
Total		19,700	\$460,523

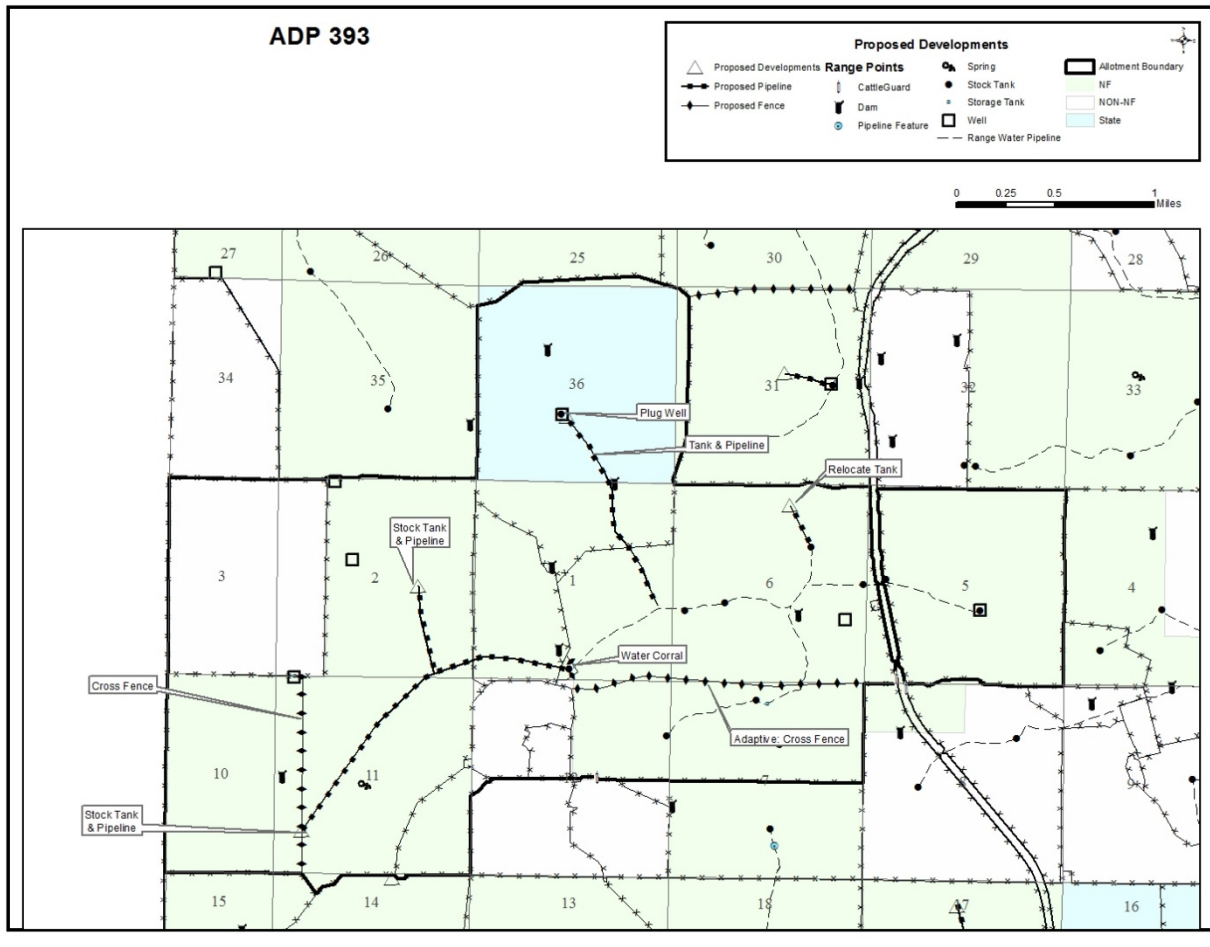
Pasture 3 & 5 Vegetation Management Project II: Proposed Actions

Pasture-Allotment	Project	Quantity Estimate	Acres Affected
P3-A360	Pipeline and Tank Section 31	2,040	500
P3-A361	Pipeline and Tank Section 10	2,480	500
P3-A361	Drill Well Section 7, Tie into pipeline	1,300	
P3-A363	Pipeline and Tanks Section 34 & 3	9,070	1,000
P3-A364	Stock Tank and Pipeline Section 7 from New Well	4,200	
P5-A378	Stock Tank and Pipeline Section 32	3,100	500
P5-A380	Stock Tank and Pipeline Section 13	1,375	500
P5-A383	Pipeline and Stock Tanks Section 18,19,&24	11,500	1,500
P5-A384	Relocate Stock Tank from Well	1,280	500
P5-A389	Pipeline and Stock Tank Section 15	1,890	500
P5-A391	Relocate Stock Tank Section 23	75	500
P5-A391	Drill Secondary Well		
P5-A392	Pipeline and Stock Tank Section 18	3,180	500
P5-A393	Pipeline and Tanks Section 10	9,500	500
P5-A393	Relocate Tank NE Section 6	1,250	500
P5-A395	Relocate Tank NE Section 21	1,400	500
P5-A395	Relocate Tank Section 17	1,700	500
P5-A395	Relocate Boundary Fence to Improve Riparian Condition	5,000	200
P5-A397	Relocate Stock Tanks Section 25 & 29	4,100	1,000
P5-A397	Cross Fence Section 25	1,425	500
P5-A399	Drill Secondary Well Section 13	1,900	7,500
P5-A402	Pipeline and Stock Tank Section 11	4,275	500
P5-A403	Pipeline and Stock Tank Section 8	1,795	500
P5-A403	Pipeline and Stock Tank Section 6	2,022	500
P5-A404	Relocate Boundary Fence to Improve Riparian Condition	2,200	500
Project Area	Adaptive management projects as found necessary for grassland management		
	Total		19,700

Pastures 3 & 5 Vegetation Management Project II Area:



Example Allotment Proposed Improvements:



C. Medora Grazing Association Range Improvements

Medora Grazing Association Range Improvements Project area is located on the Medora Ranger District of the Dakota Prairie Grasslands in Billings and Golden Valley Counties, North Dakota. The project area encompasses approximately 36,200 acres of National Forest System (NFS) lands 15,300 acres are private lands, and 3,200 acres are state lands. The project area includes 11 grazing allotments that are under permit through a grazing agreement between the Forest Service and Medora Grazing Association (MGA).

This vegetation management project includes prescribed grazing strategies, installation of range infrastructure, and implementation of restoration activities designed to improve vegetation composition, vegetative structure, riparian conditions, wildlife resources, and wooded draw conditions across the project area.

The USFS and the Medora Grazing Association and their members are the primary partners for this project.

Other potential partners: State Land Trust Department, North Dakota Game and Fish, the NDSU-Extension Service, surrounding private landowners, Rocky Mountain Elk foundation, Mule Deer Foundation, National Wild Turkey Federation, Pheasants Forever, and the Wild Sheep Foundation.

Project Duration: The OHF funds would be committed to the ongoing implementation and will be utilized within three years.

Amount of Grant request: \$200,000

Partner Contributions	Cash/In-Kind Services
USFS (Conservation Practices Funds)	\$25,645 Cash
USFS	\$45,000 In-Kind
Medora Grazing Association	\$75,215 Cash
Medora Grazing Association	\$45,000 In-Kind
Total Cash/In Kind Match	\$190,860

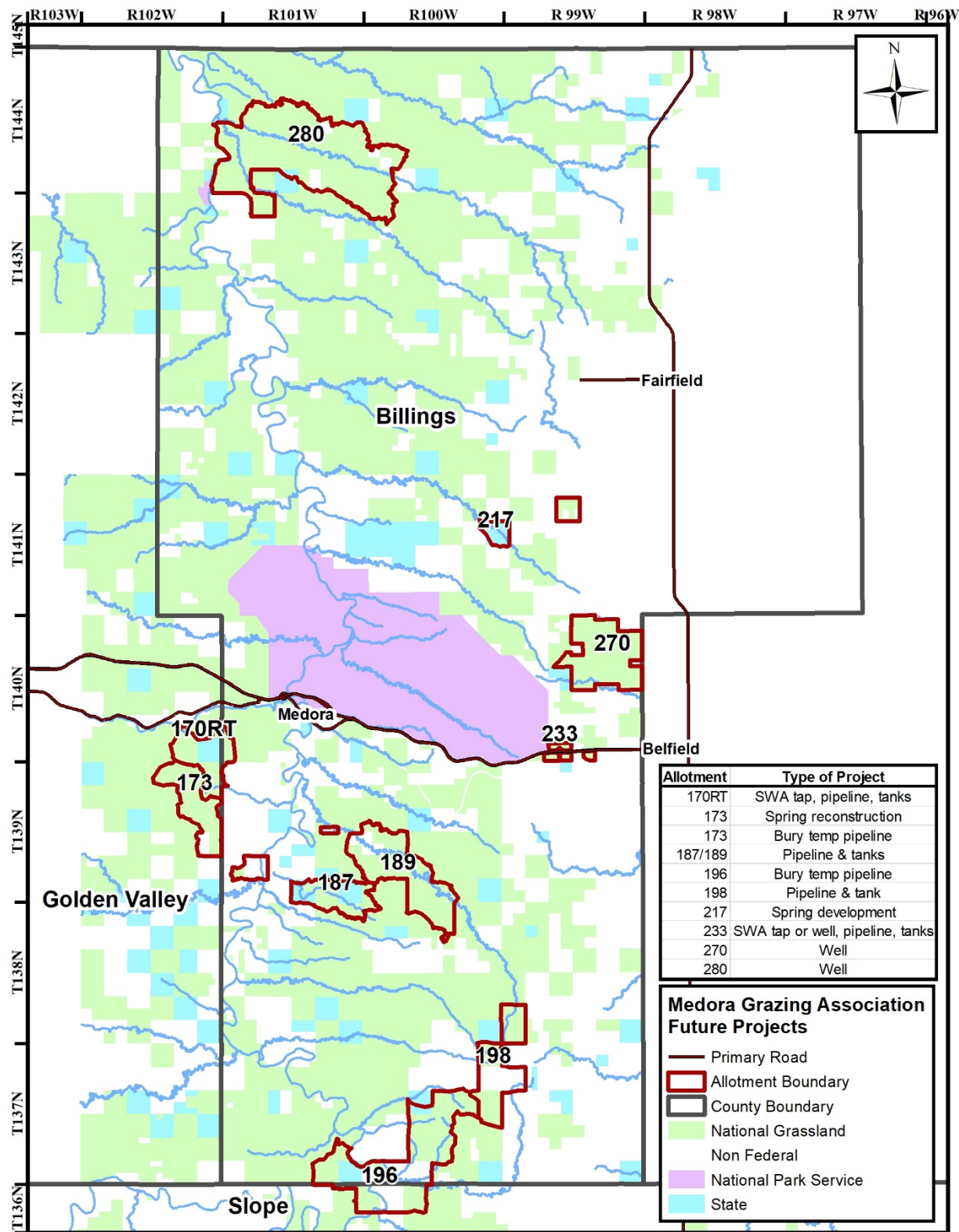
Summary of All Projects in the Medora Grazing Association Project Area:

Project Type	Quantity Estimate	Acres Affected	Total Cost
Range Water Pipeline & tanks	51,630 ft	11,500	\$796,500
Spring development/reconstruction	2	1,000	\$70,000
Water wells	2	2,000	\$21,400
Clearance and Administration			\$90,000
Total		14,500	\$390,860

Medora Grazing Association Project: Proposed Actions

Allotment	Project Name	Quantity Estimate	Acres Affected
170RTC	Pipeline and tank	150 ft	500
187/189	Pipeline and tanks	6600 ft	2,000
173	Spring Reconstruction	1 spring	500
198	Pipeline and tank	5280 ft	1,000
270	Water well	500 ft deep	1,000
233	Pipeline and tank	7200 ft	500
279 Pivot	Water wall	700 ft deep	1,000
173	Pipeline and 4 tanks	16,200 ft	2,500
196	Pipeline and 9 tanks	16,200 ft	5,000
217	Spring development	1 spring	500
			14,500

Medora Grazing Association Project Area:



D. Deep Creek Vegetation Management Part II

Deep Creek Vegetation Management area is located on the Medora Ranger District of the Dakota Prairie Grasslands in Slope County, North Dakota. The project area encompasses approximately 17,693 acres of National Forest System (NFS) lands and about 3,098 acres of state and private lands. The project area includes 20 grazing allotments that are under permit through a grazing agreement between the Forest Service and Little Missouri Grazing Association (LMGA).

This vegetation management project includes prescribed grazing strategies, installation of range infrastructure, and implementation of restoration activities designed to improve vegetation composition, vegetative structure, riparian conditions, wildlife resources, and wooded draw conditions across the project area.

The USFS and the Little Missouri Grazing Association and their members are the primary partners for this project.

Other potential partners: State Land Trust Department, North Dakota Game and Fish, the NDSU-Extension Service, surrounding private landowners, Rocky Mountain Elk foundation, Mule Deer Foundation, National Wild Turkey Federation, Pheasants Forever, and the Wild Sheep Foundation.

Project Duration: Funds would be committed to the projects immediately and would be utilized within three years.

Amount of Grant request: \$251,100

Partner Contributions	Cash/In-Kind Services
USFS (Conservation Practices)	\$20,000 Cash
USFS	\$60,000 In-Kind
Little Missouri Grazing Association	\$90,250 Cash
Little Missouri Grazing Association	\$50,000 In-Kind
Total Cash/In Kind Match	\$220,250

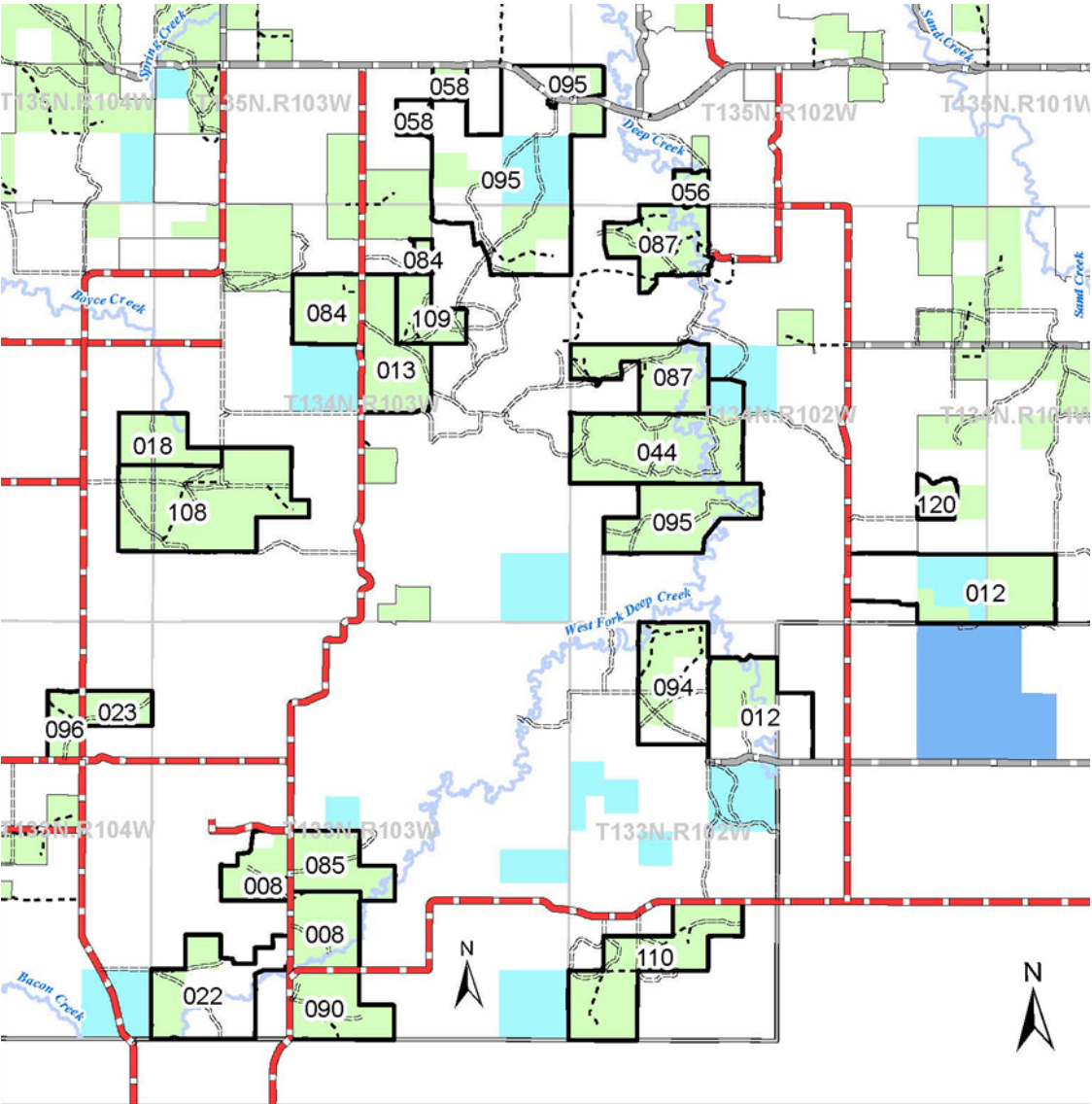
Summary of All Projects in the Deep Creek Project Area:

Project Type	Quantity Estimate	Acres Affected	Total Cost
Range Water Pipeline and tanks	64,916 ft	0	\$227,700
Cross fences	42,830 ft	5,300	\$56,900
Hardened crossings	7	11,600	\$10,500
Stock Dam Reclamation	3	1,000	\$47,950
Water wells and pumps	2	300	\$16,400
Water well abandonment	1	0	\$1,900
Clearance and Administration			\$110,000
Total		18,200	\$471,350

Deep Creek Vegetation Management Project: Proposed Actions

Allotment	Project Name	Quantity Estimate	Acres Affected
#008	Pipeline and tank	1,959 ft	500
#008	Cross Fence	5,650 ft	500
#008	Cross Fence	5,500 ft	600
#008	Plug abandoned well	150 ft	
#012E	Pipeline	3,000 ft	500
#012E	Cross Fence	5,280 ft	600
#012W	Pipeline & tank	1,950 ft	500
#012W	Pipeline & tank	1,911 ft	500
#012W	Cross Fence	2,640 ft	600
#012W	Hardenend creek crossings	2 each	
#012W	Remove dam in P 7	3,000 cu yd	500
#013	Pipeline & tank	4,913 ft	300
#013	Pipeline & tank	4,573 ft	300
#022	Pipeline & tank	3,000 ft	500
#022	Pipeline & tank	2,400 ft	500
#022	Cross Fence	2,640 ft	600
#044	Storage tank	10,000 gal	500
#044	Solar Pump	1.0 each	
#044	Pipeline & tank	5,000 ft	500
#044	Pipeline & tank	2,190 ft	500
#044	Pipeline	2,400 ft	500
#044	Hardened creek crossings	2 each	
#056	Hardened creek crossing	1 each	
#085	Pipeline & tank	2,000 ft	300
#085	Pipeline & tank	2,000 ft	300
#085	Remove dam in P 1	3,000 cu yd	300
#087	Pipeline & tank	3490 ft	500
#087	Pipeline & tank	2435 ft	500
#087	Pipeline	4188.0	500
#087	Hardenend creek crossings	2 each	
#090	Well	300 ft	300
#090	Pipeline & 2 tanks	5,149 ft	300
#090	Remove dam	3,000 cuyd	200
#090	Cross Fence	5,280 ft	300
#094	Pipeline & tank	1,433 ft	300
#094	Pipeline	2,645 ft	300
#094	Cross Fence	5,280 ft	300
#094	Cross Fence	5,280 ft	300
#095	Pipeline & tank	5,280 ft	1,500
#095	Cross Fence	5,280 ft	1,500
#096	Pipeline & tank	3,000 ft	1,500
			18,200

Deep Creek Vegetation Management Project Area

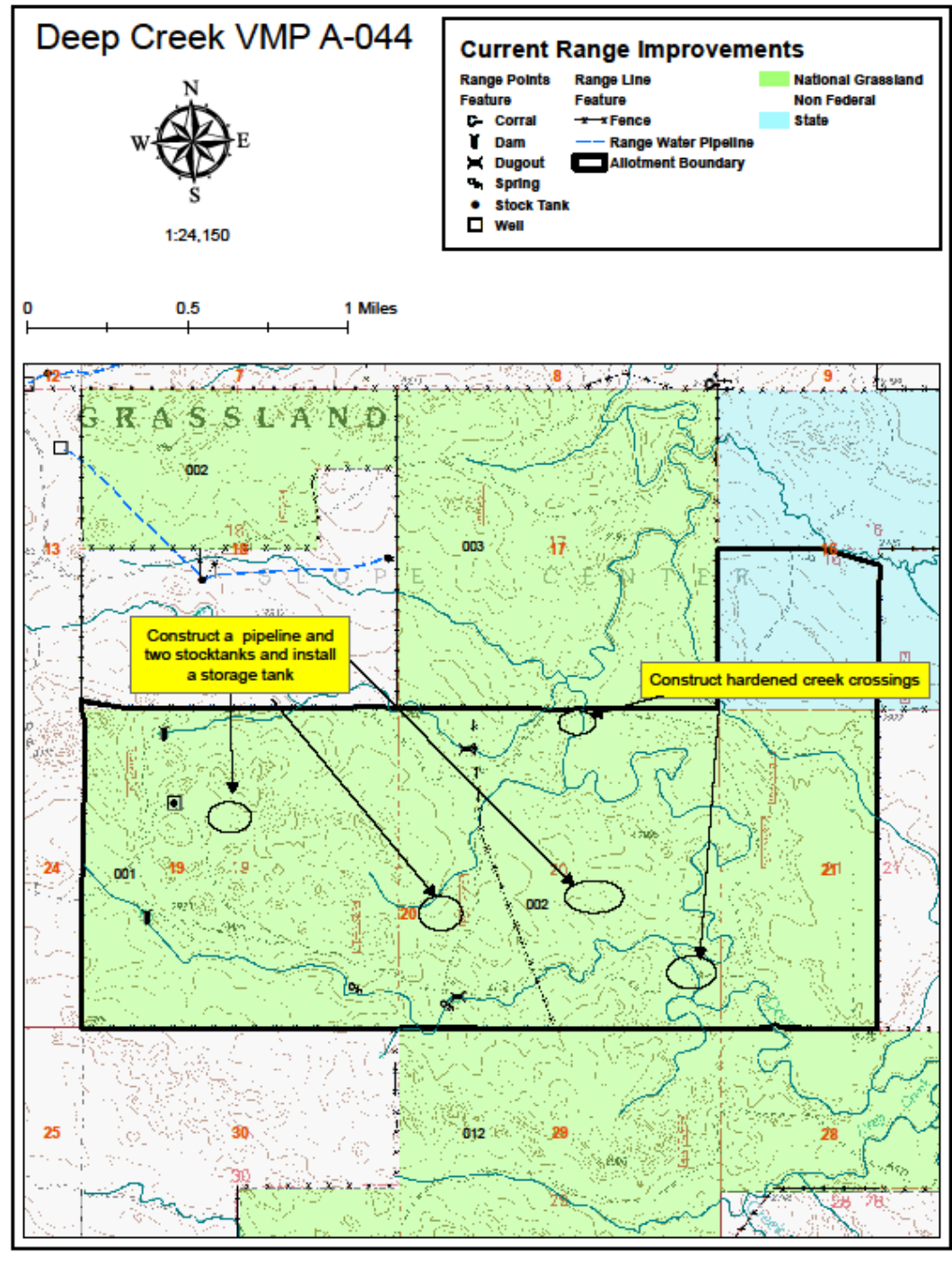


Deep Creek Vegetation Management Project allotment locations.
 Map by D. Fouts - USFS
 21 July, 2016



- DeepCreekAllotments
- RoadLinearEvents - Existing Status
- Operational Maint Level
- 2 - HIGH CLEARANCE VEHICLES
- 3 - SUITABLE FOR PASSENGER CARS
- 4 - MODERATE DEGREE OF USER COMFORT
- National Grassland
- Non Federal
- National Wildlife Refuge
- State

Example Allotment Proposed Improvements:



E. Cedar River National Grasslands Range/Wildlife Project

The Cedar River National Grassland encompasses approximately 6,870 acres of National Forest System (NFS) lands and approximately 1,700 acres of intermingled state and private lands. These lands are widely dispersed and disjointed in southwestern North Dakota (Figure 1). Much of the grassland are located in Sioux County and are within the boundaries of the Standing Rock Sioux Indian Reservation. The remaining acreage, totaling 480 acres are in Grant County. The Grassland is divided into twelve management units, eleven grazing allotments and the Knispel Wildlife Area.

The Cedar River National Grassland is managed for multiple-uses. Two primary uses are providing forage for domestic livestock and recreational opportunities for outdoor enthusiast. Grazing and vegetation management is accomplished cooperatively between the Forest Service and Cedar River Cooperative Grazing Association (CRCGA). The Knispel Wildlife area is managed for wildlife habitat and is grazed approximately 1 year in 4.

In 2004, the Cedar River Allotment Management Plan Revision environmental assessment and decision notice were signed to incorporate improved management on the Cedar River National Grassland. Currently, the Grand River Ranger District has proposed improved vegetation management and continued livestock grazing under an adaptive management strategy on the Cedar River National Grasslands. The Adaptive Management Strategy includes opportunities for improved prescribed grazing strategies, installation of range infrastructure, and the implementation of restoration activities designed to improve vegetation composition, vegetative structure, riparian conditions, and wildlife resources across the project area. A final decision and implementation of the Adaptive Management Strategy is expected in 2021.

As much of the area is currently under good prescribed grazing management systems, we have identified the following projects to maintain or improve current conditions on the Cedar River National Grasslands. The proposed projects are considered NEPA ready.

Partners: The USFS and the Cedar River Cooperative Grazing Association and their members are the primary partners for this project. Other potential partners: State Land Trust Department, North Dakota Game and Fish, surrounding private landowners, Mule Deer Foundation, National Wild Turkey Federation, and Pheasants Forever.

Project Duration: Funds would be committed to the projects and would be completed within three years.

Amount of Grant request: \$39,000

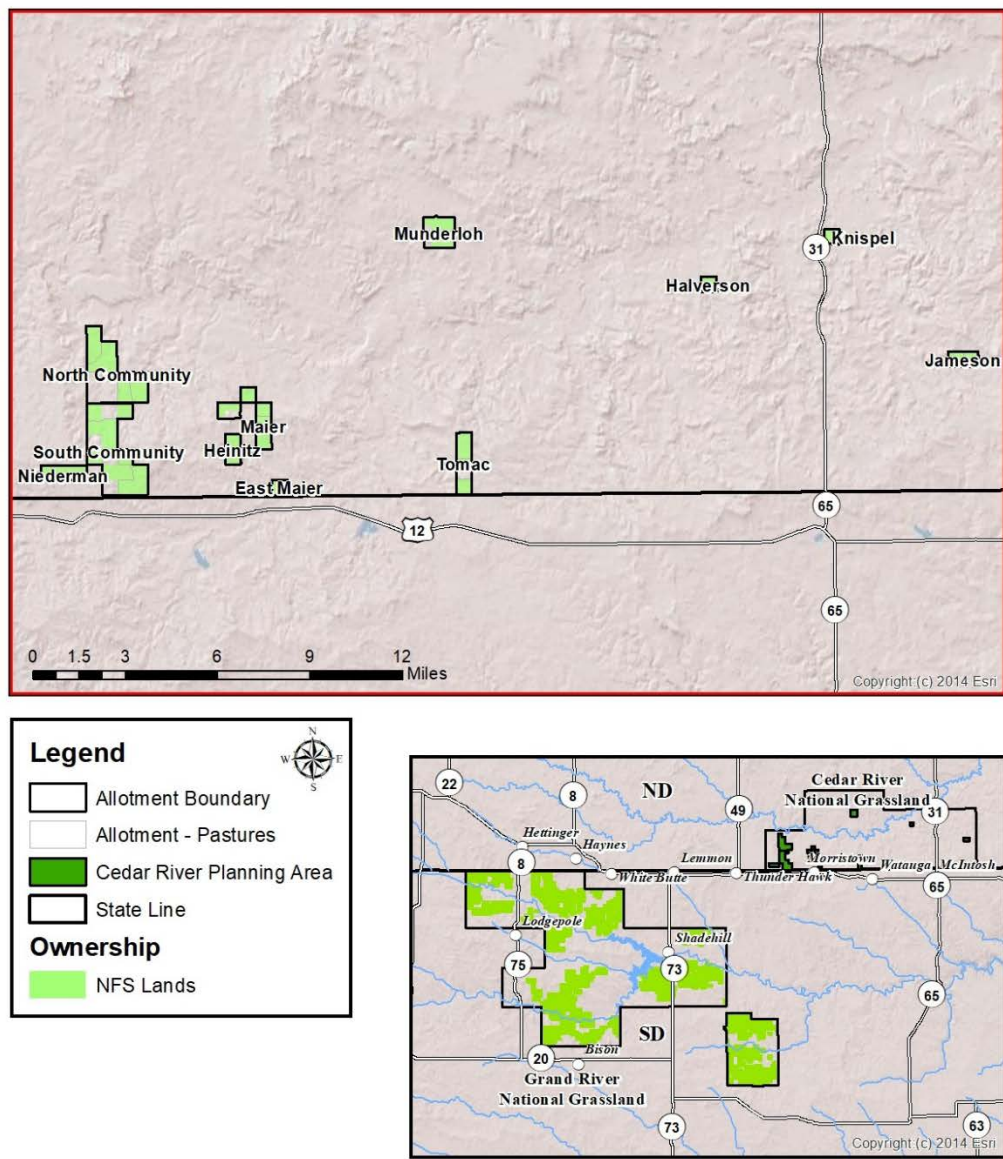
Estimated Partner Contributions:

Partner Contributions	Cash/In-Kind Services
USFS/GRCGA (Conservation Practices Funds)	\$8,000 Cash
USFS	\$6,000 In-Kind
Cedar River Cooperative Grazing Association	\$12,000 Cash
Cedar River Cooperative Grazing Association	\$7,650 In-Kind
Other Partners	TBD
Total Cash/In Kind Match	\$33,650

Cedar River Grazing Association Project List:

Project Name	Quantity Estimate	Acres Affected	Total Project Cost
Fence Replacement (3 Miles)	15,840 ft	1,920	\$24,000
Dam Repair, Knispel Wildlife Area	1	160	\$10,000
Stock Dam & Dugout Repair, Jameson Allotment	2	320	\$10,000
Range Well Re-drill, North Community Allotment	1	800	\$10,000
Pipeline and Stock Tank, North Community Allotment (State)	4,000 ft	640	\$12,000
Wildlife Escape Ramps	10 ramps	-	\$ 650
Clearance and Administration			\$ 6,000
Total		3,840	\$72,650

Figure 1. Cedar River National Grasslands



F. North Dakota Badlands Restoration (Juniper Removal Part II)

Juniper encroachment across the Little Missouri National Grassland has increased substantially over the last several decades. Mechanical removal of juniper is one tool to manage that encroachment. Juniper removal will improve vegetation for livestock, hydrology, habitat for wildlife, and reduce fuels to mitigate threats from wildfire. Mechanical removal could include cutting and piling or mastication. On the Medora district there are several locations within Billings County that have been identified in the *North Billings County Allotment Management Plan Revision* Record of Decision for juniper removal. One area south of I-94 near Painted Canyon has also been selected for future treatment. On the McKenzie district, several locations have been identified in Pastures 3 & 5 and Pastures 4 & 6.

Within the Mikes Creek allotment (#135) Unit 1 is being treated using Forest Service fire crew and contract work in 2020 to complete the 250 acre unit utilizing 2018 OHF Funds. Additional units in Mike's Creek, Sully Springs and Pastures 3 & 5 and Pastures 4 & 6 would be treated using the requested funds for a total of 600 acres.

This project is currently part of the Joint Chief's (USFS/NRCS) funding for the ND Badlands Restoration Project including funds for work on Forest Service lands and also EQIP funds for work on Private lands. Additional funds have also been added from the National Wild Turkey Federation. Potential additional partnerships will be pursued with various groups such as Rocky Mountain Elk Foundation, Mule Deer Foundation, ND Game and Fish Department, ND Forestry Service, etc. Partnership contributions may include cash and/or equipment (e.g. masticator).

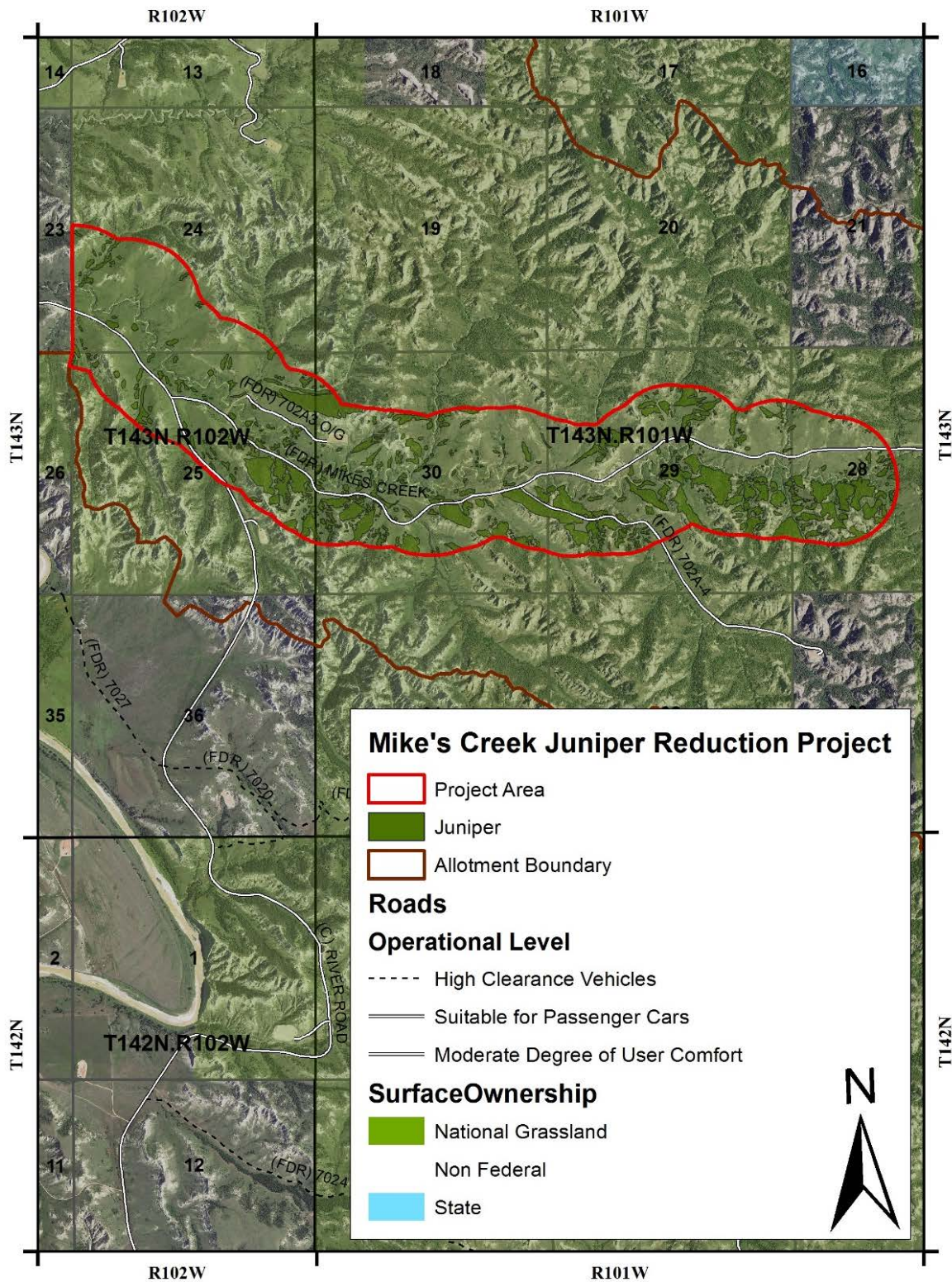
Project Duration: The USFS is committed to restoration of these sites. Funds would be committed to the project immediately and would be utilized within three years.

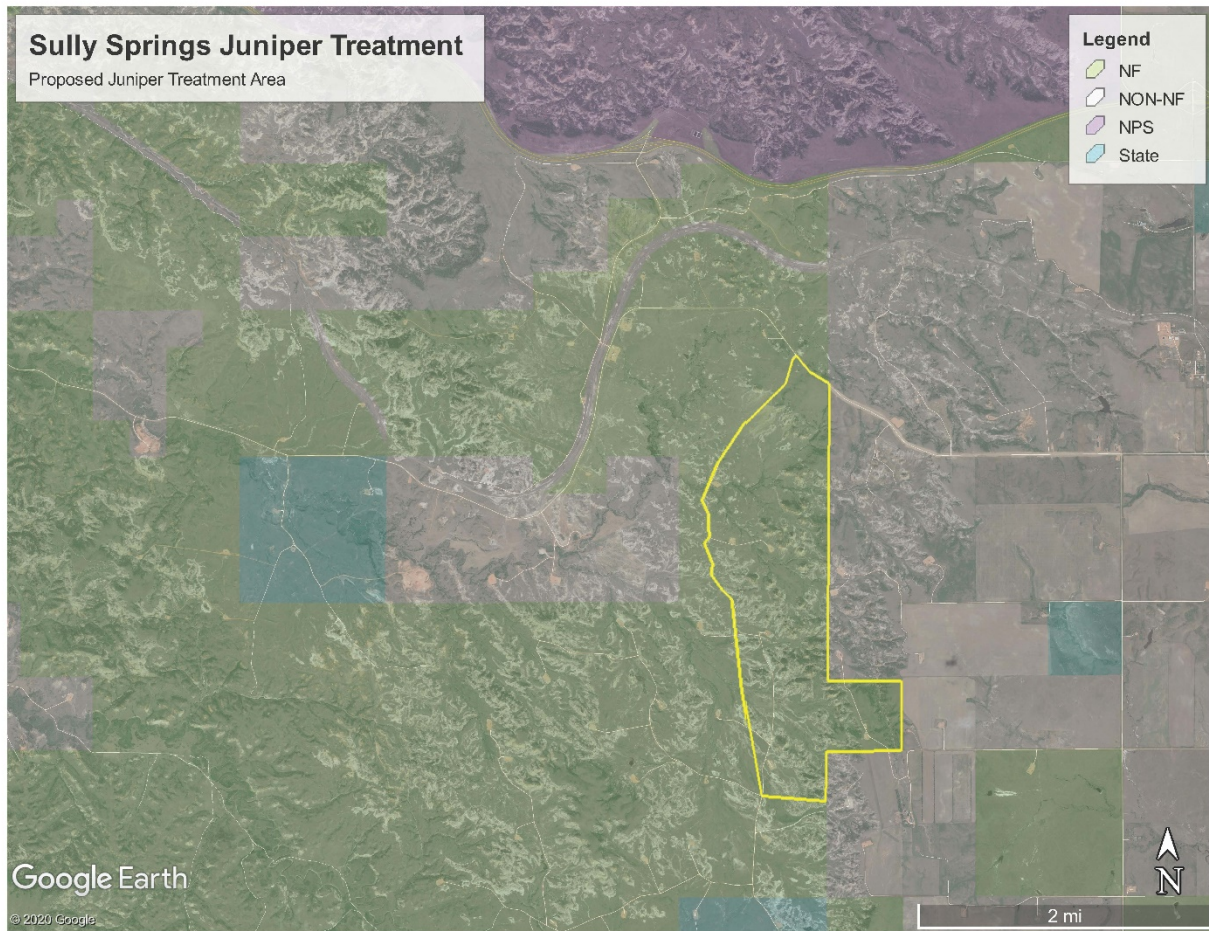
Amount of Grant request: \$350,000

Partner Contributions	Project Total
USFS (Joint Chiefs and FS allocated)	\$225,000 Cash
USFS	\$60,000 In-Kind
National Wild Turkey Federation	\$20,000
Other contributors	\$45,000
Total Cash/In Kind Match	\$350,000

Summary of All Projects in the Medora Grazing Association Project Area:

Project	Quantity Estimate	Acres Affected	Total Cost
Juniper removal –Mike's Creek and Sully Springs	500 acres	2500	\$600,000
Juniper removal-Pastures 3 & 5 and 4 & 6	100 acres	500	\$100,000
Total		3000 acres	\$700,000





All Projects Summary

Project	Total Cost	Grant/ Cash	FS Cash/ In-Kind	Other Contrib.	Acres Affected
Pasture 4 & 6 Vegetation Management Project	\$680,000	\$340,000	\$170,000	\$170,000	31,785
Pastures 3 & 5 Vegetation Management Project II	\$460,523	\$230,000	\$125,000	\$105,523	19,700
Medora Grazing Association Range Improvements	\$390,860	\$200,000	\$70,645	\$120,215	14,500
Deep Creek Vegetation Management Part II	\$471,350	\$251,100	\$80,000	\$140,250	18,200
Cedar River National Grasslands Range/Wildlife Project	\$72,650	\$39,000	\$14,000	\$19,650	3,840
North Dakota Badlands Restoration (Juniper Removal Part II)	\$700,000	\$350,000	\$285,000	\$65,000	3,000
Total	\$2,775,383	\$1,410,100	\$744,645	\$620,638	91,025

Project Name: D. CROW FLIES HIGH STATE RECREATION AREA MASTER PLAN AND DEVELOPMENT

North Dakota Parks and Recreation Department and North Dakota Indian Affairs Commission and/or Three Affiliated Tribes of the Fort Berthold Reservation:

The North Dakota Parks and Recreation Department (NDPRD) offers a variety of recreation opportunities and sustainably manages resources while enriching generations through experiences that connect people and places. The Crow Flies High State Recreation Area is a 253-acre scenic overlook located two miles west of New Town in Mountrail County, North Dakota currently managed by the NDPRD in partnership with the Three Affiliated Tribes. The site provides scenic views of Lake Sakakawea and is an area of historical significance for the history of the Three Affiliated Tribes.

D. CROW FLIES HIGH STATE RECREATION AREA MASTER PLAN AND DEVELOPMENT

Abstract/Executive Summary:

The Crow Flies High State Recreation Area Master Plan and Development project is located two miles west of New Town in Mountrail County, North Dakota. The project area encompasses approximately 253 acres of state land managed under the authority of NDPRD. The project area includes a scenic overlook, access roadway and parking area, interpretive signs, historical monument, unmanaged trails, and grasslands. Currently, the Lewis and Clark State Park staff manage the operation and maintenance of the site in cooperation with the Three Affiliated Tribes.

The purpose of the state recreation area management plan is to serve as an update to the current cooperative management agreements with Tribal and local governments, to develop a long term plan for the site area, and to enhance current management objectives related to vegetation management, cultural interpretation and recreation opportunities.

Specifically, there is a need to incorporate management objectives that:

- Identify opportunities for the long-term use of the site through the development of a state recreation area management plan;
- Research cultural and historical information through documentation and discussions with tribal representatives to develop cultural and historical materials such as educational materials and interpretive signs;
- Maintain or improve site conditions through vegetation management and noxious weed control that would maintain and enhance diverse, native plant and animal communities based on the capabilities of the ecology of the site.
- Develop recreational opportunities for the public that directly address both local and regional needs identified in the 2018-22 Statewide Comprehensive Outdoor Recreation Plan (SCORP). These include development of and access to trails, including motorized trails; increased swimming and water recreation access; and more picnicking facilities (picnic areas).

In summary, this state recreation management plan project provides a cooperative partnership with state agencies and tribal and local governments in order to enhance a conservation and recreational area in the western part of North Dakota. As increases in demand for recreation in the region continues

this project provides an opportunity to: provide an outdoor recreation experience; implement conservation management practices; and provide a cultural and historical interpretive program important to the region.

Project Duration: The project expects to begin cooperative discussions immediately and have a recreation plan in place within a year and recreational, cultural, and vegetation enhancements started thereafter. Funds would be committed to the projects at that time and would be utilized within two to three years.

Project Location Description:

Crow Flies High State Recreation Area Master Plan and Development project is located west of New Town in Mountrail County, North Dakota.

Partners:

NDPRD and the Three Affiliated Tribes would be the primary partners for the project.

Other potential partners: ND Tourism Department, ND Historical Society, and surrounding communities including New Town.

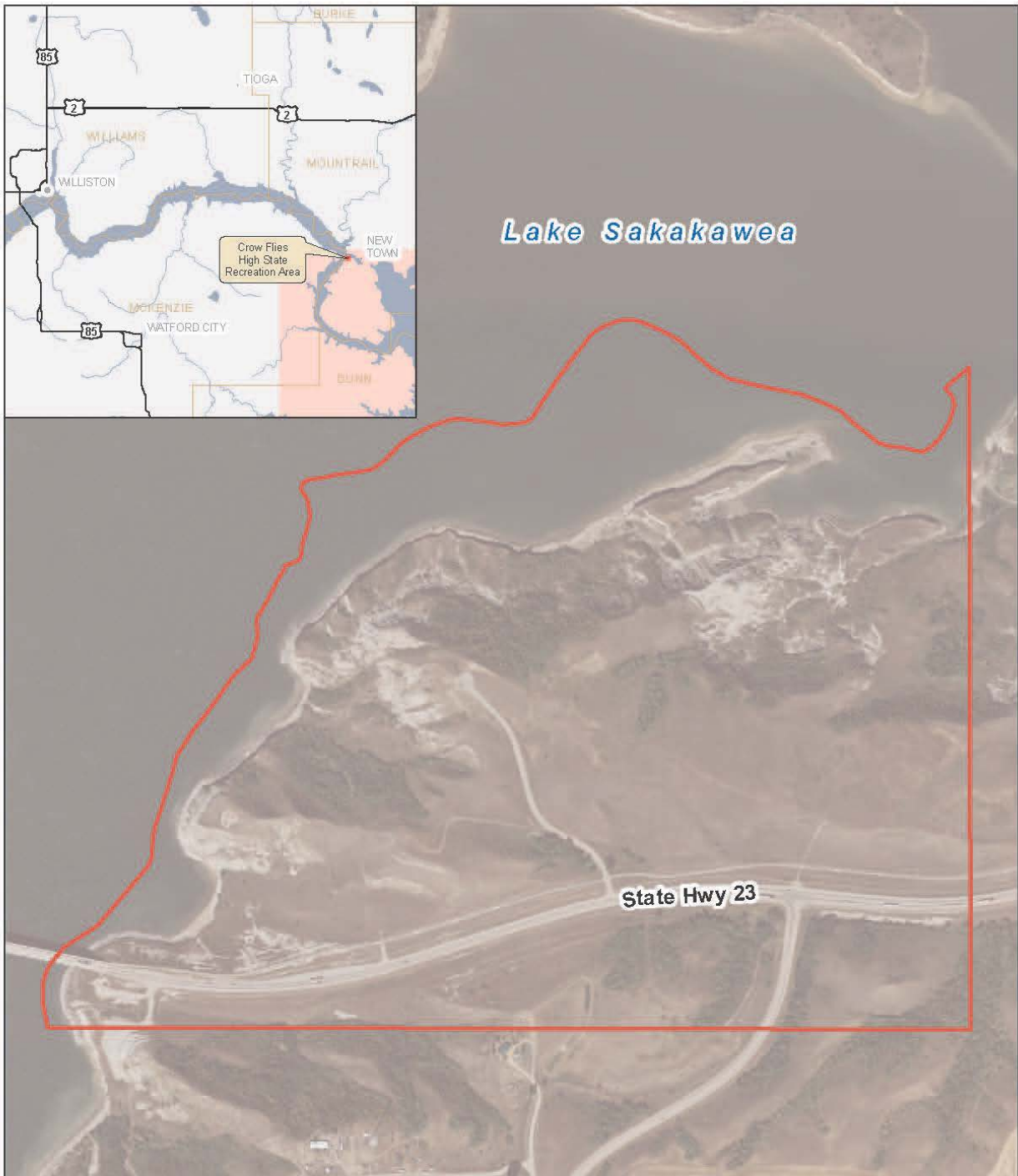
Amount of Grant request: \$58,000

The Crow Flies High State Recreation Area Master Plan and Development project contains a number of projects that have been identified to enhance a recreational site in western North Dakota that may provide greater access to trails and Lake Sakakawea and provide a greater understanding of the cultural and historical significance of the area. Projects will be prioritized by the greatest public benefit. The requested funding would be used to assist in the implementation of the selected projects.

Partner Contributions	Cash/In-Kind Services
NDPRD (Natural Resources Program)	\$2,500 (vegetation management)
NDPRD (Lewis and Clark State Park staff)	\$13,000 In-Kind (2X trip/month/5 months for 3 years)
NDPRD (Planning staff)	\$5,000 in-kind
NDPRD (Parks)	\$12,500
NDPRD (OHVs)	\$25,000
Indian Affairs Commission or Three Affiliated Tribes	TBD

Summary of All Projects in the State Recreation Master Plan and Development Project:

Project Type	Quantity	Cost Estimate
Interpretive signs	4	\$1000 each
Picnic Tables	3	\$2000 each
OHV Trail Development	1 mile	\$25,000
Vegetation Management	.5 acre	\$2,500
Large Trash Bins	1	\$2,500 each



CROW FILES HIGH STATE RECREATION AREA

NEW TOWN, NORTH DAKOTA

S1/2, S14, T152N, R92W

LATITUDE: 47.979693

LONGITUDE: -102.542613



0 600
Feet

1 INCH = 600 FEET